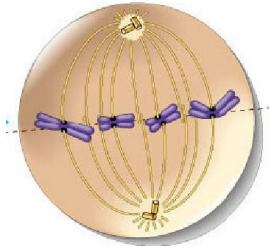


## Mitosis

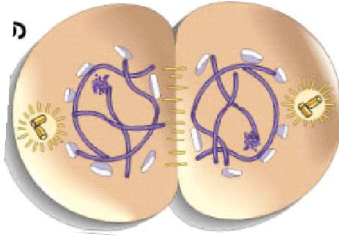
Go to this website to help you answer the following questions:

<http://www.cellsalive.com/mitosis.htm>

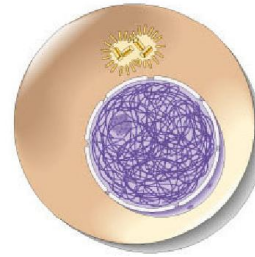
1. Identify the stages of these cells by writing the name of the stage under the picture:



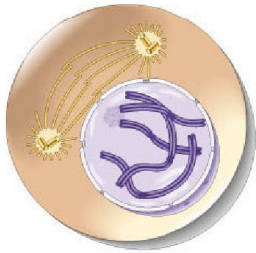
\_\_\_\_\_



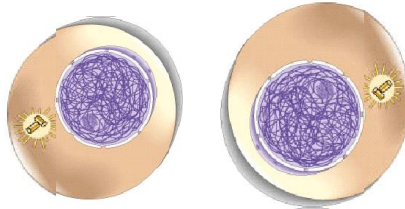
\_\_\_\_\_



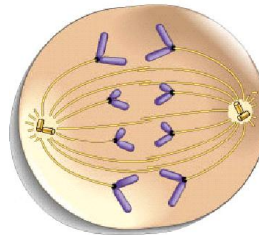
\_\_\_\_\_



\_\_\_\_\_



\_\_\_\_\_

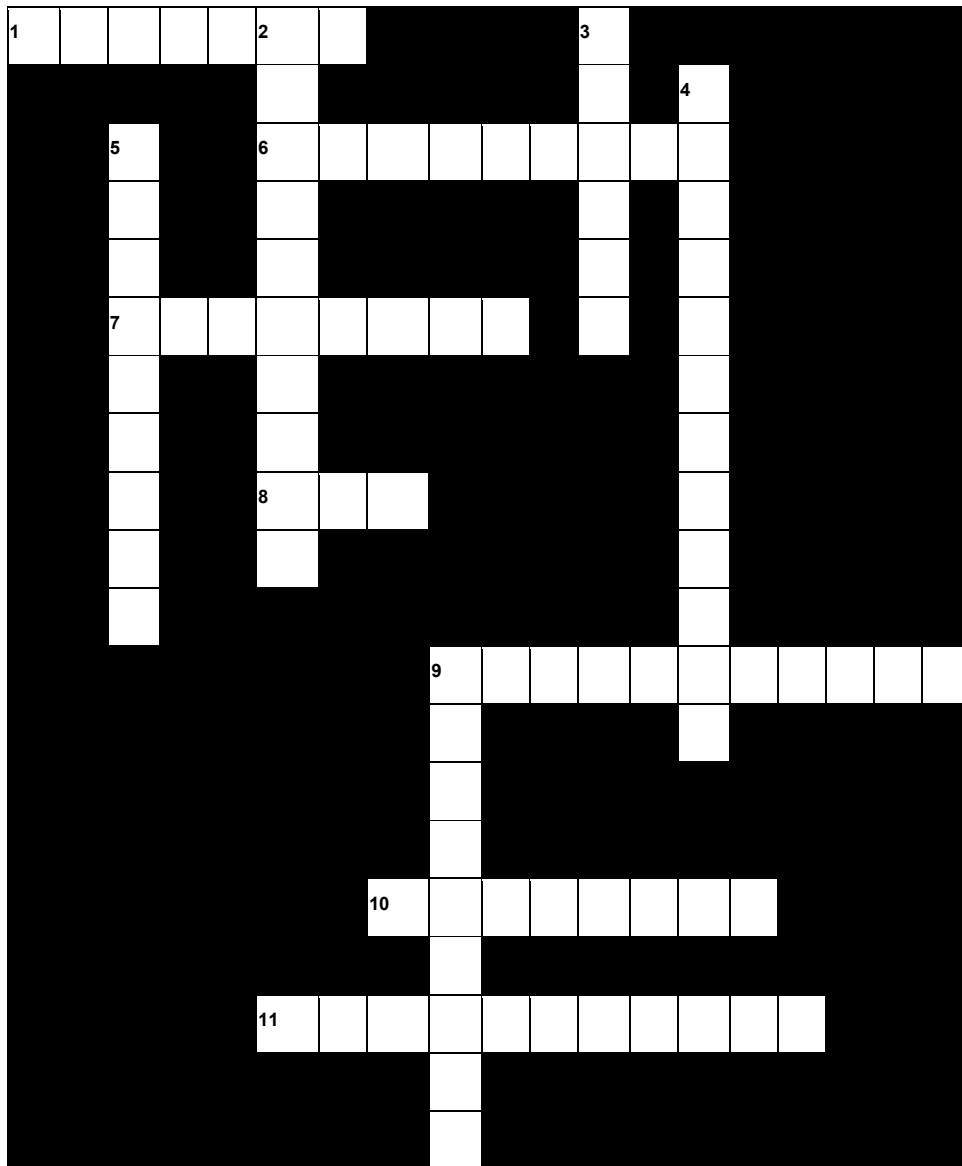


\_\_\_\_\_

- \_\_\_\_\_ is the longest period of the complete cell cycle during which DNA \_\_\_\_\_, the centrioles divide, and proteins are actively produced.
- \_\_\_\_\_ is the first mitotic stage where the nucleolus fades and chromatin (replicated DNA and associated proteins) \_\_\_\_\_ into chromosomes.
- \_\_\_\_\_ is the second mitotic stage where the tension applied by the spindle fibers aligns all \_\_\_\_\_ in one plane at the center of the cell.

5. \_\_\_\_\_ is the third mitotic stage where the spindle fibers shorten and the \_\_\_\_\_ (daughter chromosomes) are pulled apart and begin moving to the \_\_\_\_\_.
6. \_\_\_\_\_ is the fourth mitotic stage where the \_\_\_\_\_ arrive at the poles and the spindle fibers that have pulled them apart disappear.
7. \_\_\_\_\_ is the third phase in the cell cycle where the \_\_\_\_\_ not attached to chromosomes begin breaking down until only that portion of overlap is left. It is in this region that a contractile ring cleaves the cell into two \_\_\_\_\_.

## Mitosis



### Across

- 1: The process in which one cell divides into two new cells  
 6: The fourth stage of mitosis  
 7: The third stage of mitosis  
 8: The number of phases in the cell cycle including the stages of mitosis  
 9: These rod shaped structures are in the nucleus  
 10: This first mitotic stage follows Interphase  
 11: This is when the cell separates and becomes two cells. This is also the last phase in the cell cycle, in which the nuclear membrane reforms

### Down

- 2: This phase is where the DNA replicates  
 3: There are THREE of these in the cell cycle  
 4: Another name for mitosis  
 5: In this mitotic stage the chromatids are lined up in the middle on the spindle fiber found in the nucleus  
 9: This organelle is in charge of forming the spindle fiber bridge in mitosis