

GPPSS Student Enrollment Presentation

Grosse Pointe Public School System

April 10, 2017

Purpose of Presentation :

- To provide the Board of Education and the community data regarding actual and projected enrollment changes in GPPSS
- Inform the 2017-18 budget development process

Data Sources:

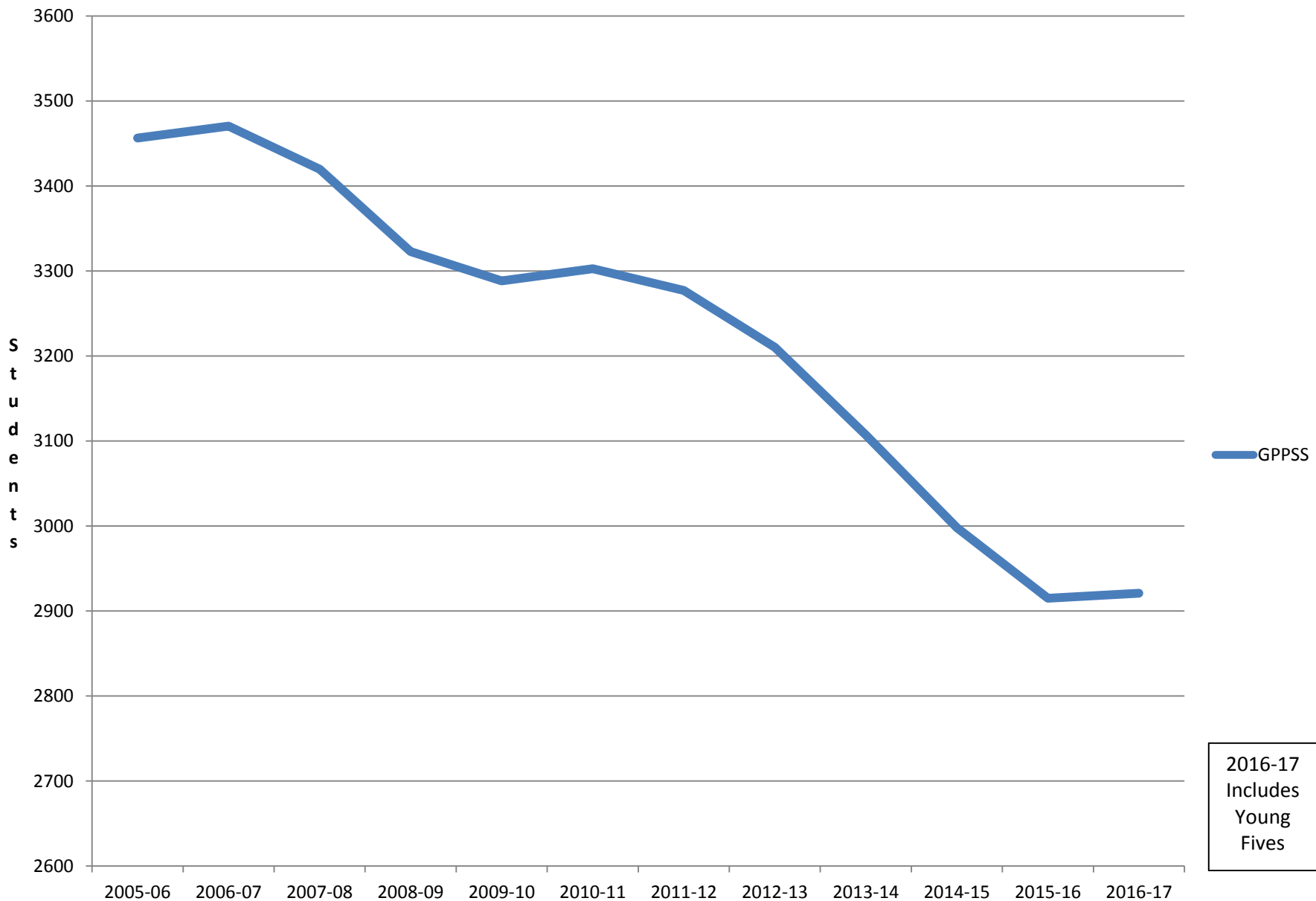
- All data from the 2005-06 school year through the 2016-17 school year is taken from the Fall Student Count
- All projections are from the report provided by Plante Moran Cresa dated 3/22/17

Report Structure:

- Elementary Enrollment Data
- Middle School Enrollment Data
- High School Enrollment Data
- District Enrollment Data
- Statewide and Private/Parochial Data

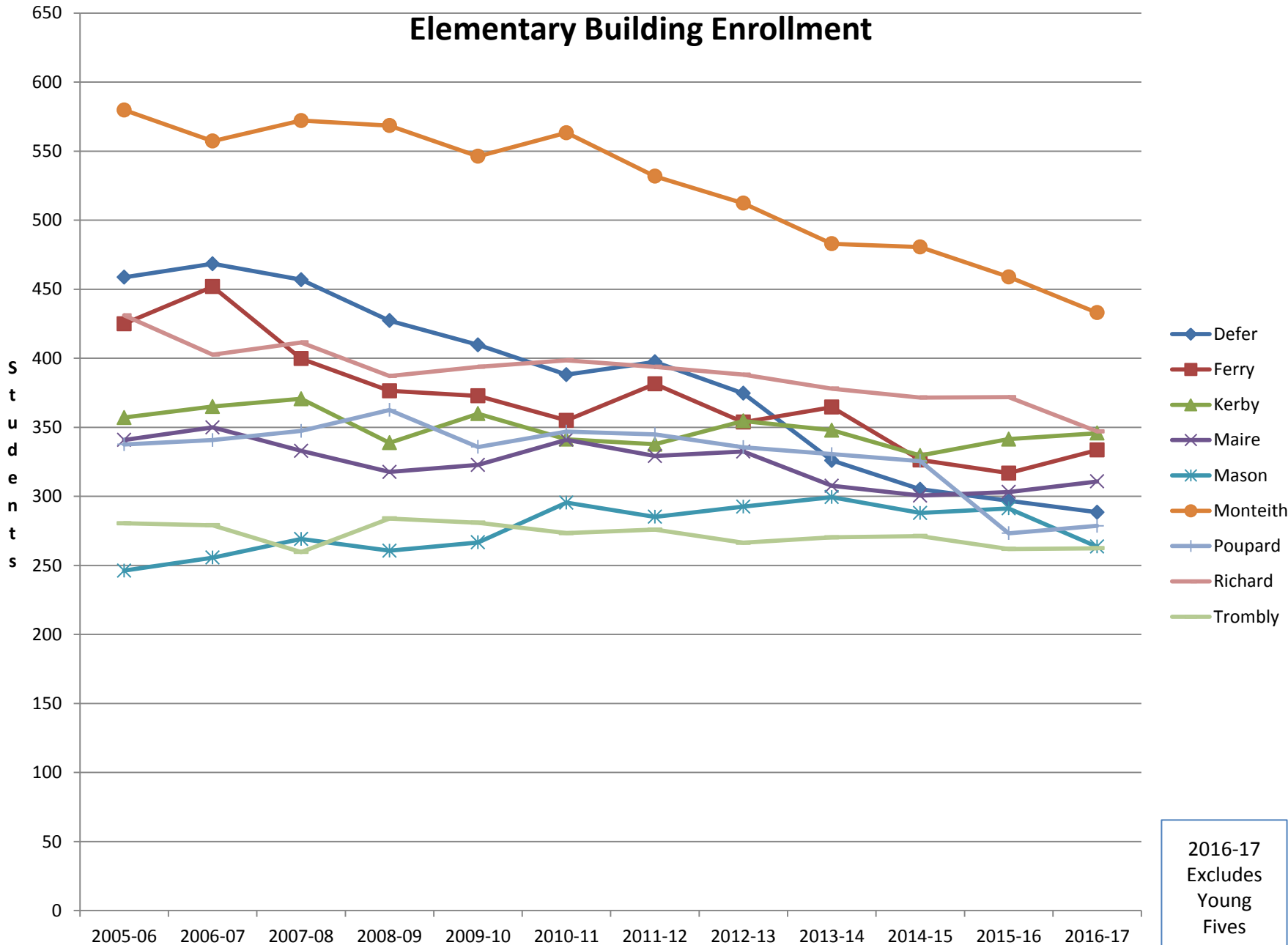
ELEMENTARY SCHOOL ENROLLMENT

Total Elementary District Enrollment



4/10/2017

Elementary Building Enrollment

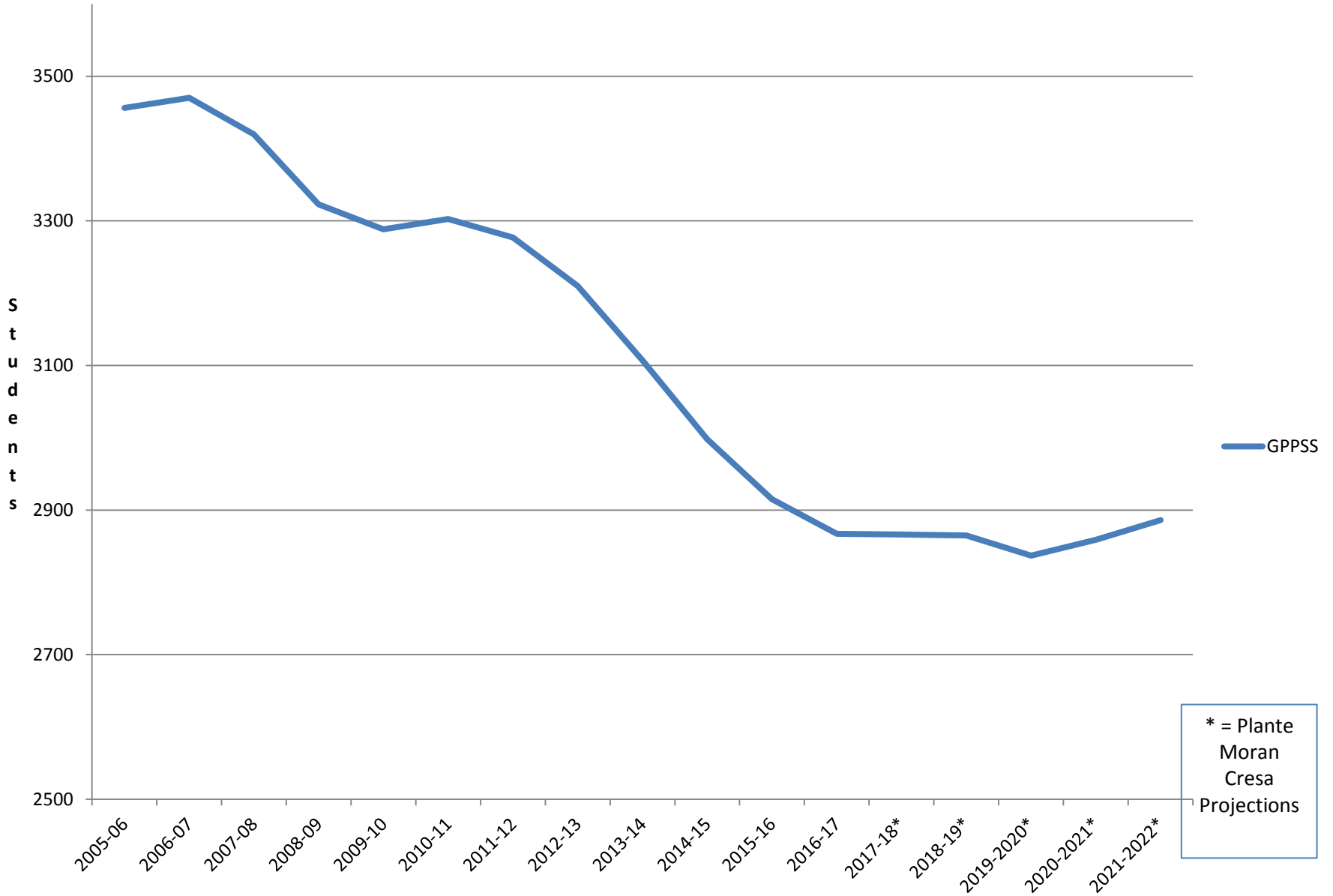


2016-17
Excludes
Young
Fives

Elementary Building Enrollment Percentage Change

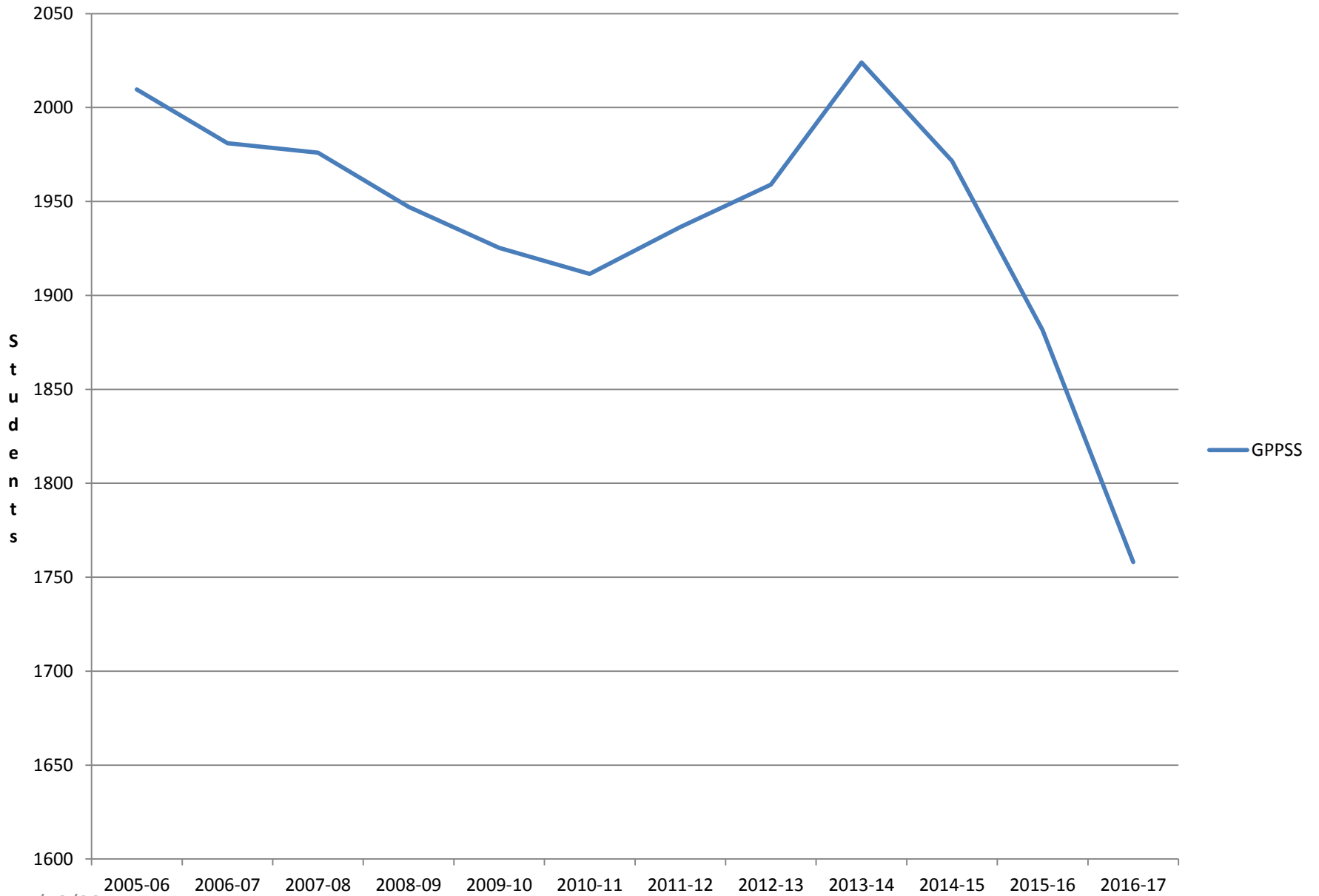
Building	2005-06	2016-17*	Percentage Change
Defer	459	288	-37%
Ferry	425	334	-22%
Kerby	357	346	-3%
Maire	341	311	-9%
Mason	246	264	7%
Monteith	580	433	-25%
Poupard	338	279	-17%
Richard	431	347	-20%
Trombly	280	262	-6%
Total	3456	2863	-17%
*Excludes Young Fives			

Projected GPPSS Elementary Enrollment Including Young Fives

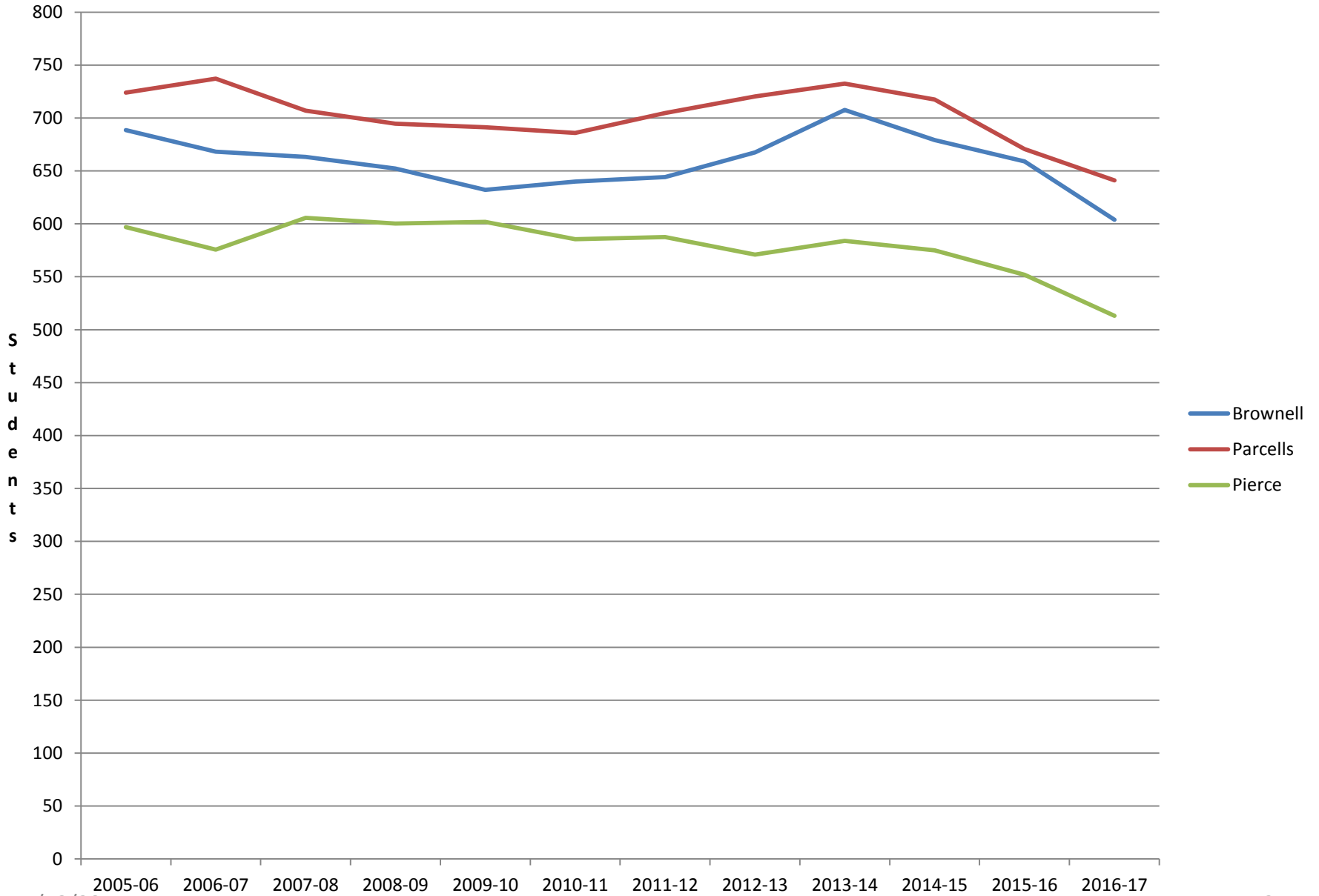


MIDDLE SCHOOL ENROLLMENT

Total Middle School Enrollment



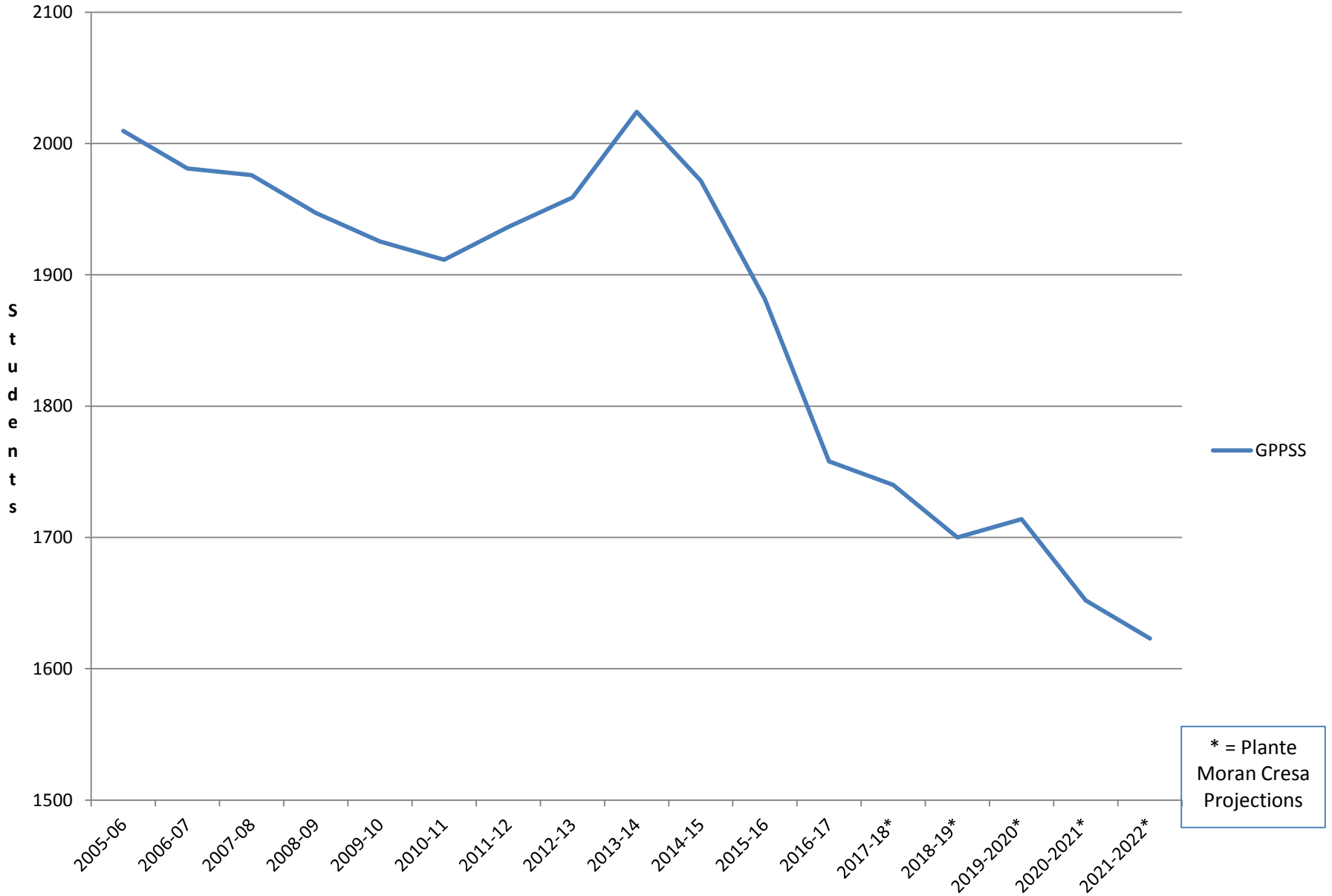
Middle School Building Enrollment



Middle School Building Enrollment Percentage Change

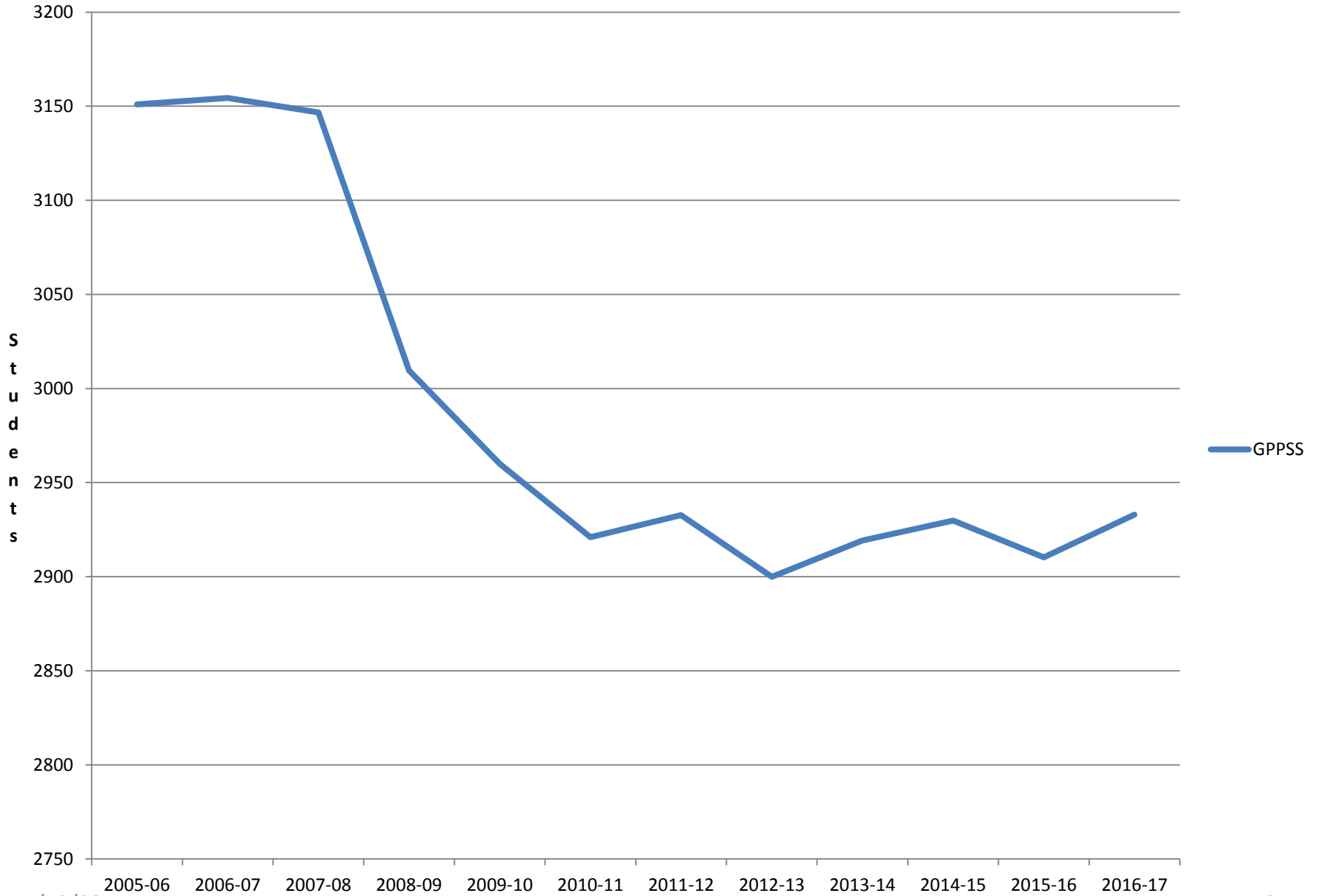
Building	2005-06	2016-17	Percentage Change
Brownell	689	604	-12%
Parcells	724	641	-11%
Pierce	597	513	-14%
Total	2010	1758	-13%

Projected Total GPPSS Middle School Enrollment

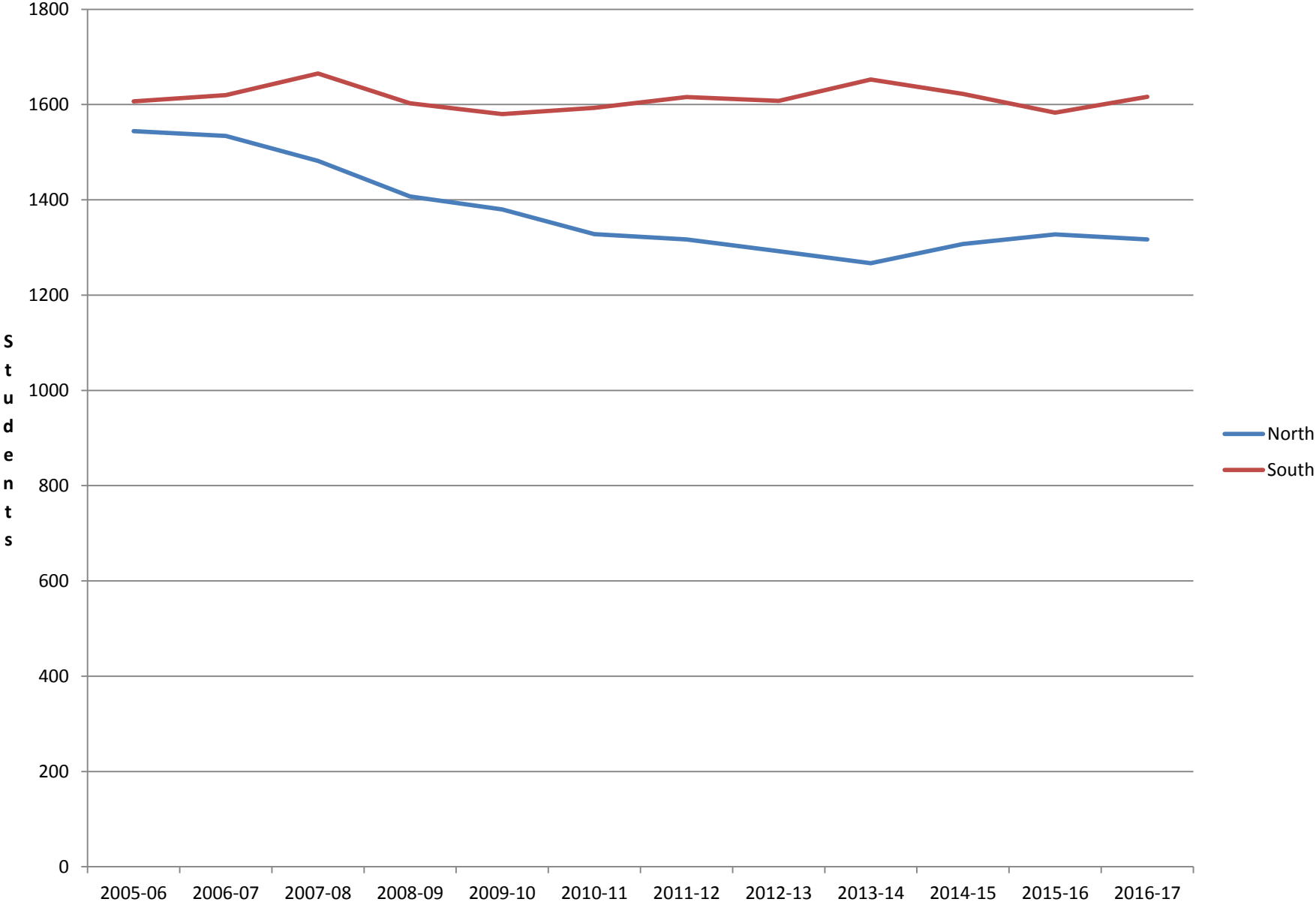


HIGH SCHOOL ENROLLMENT

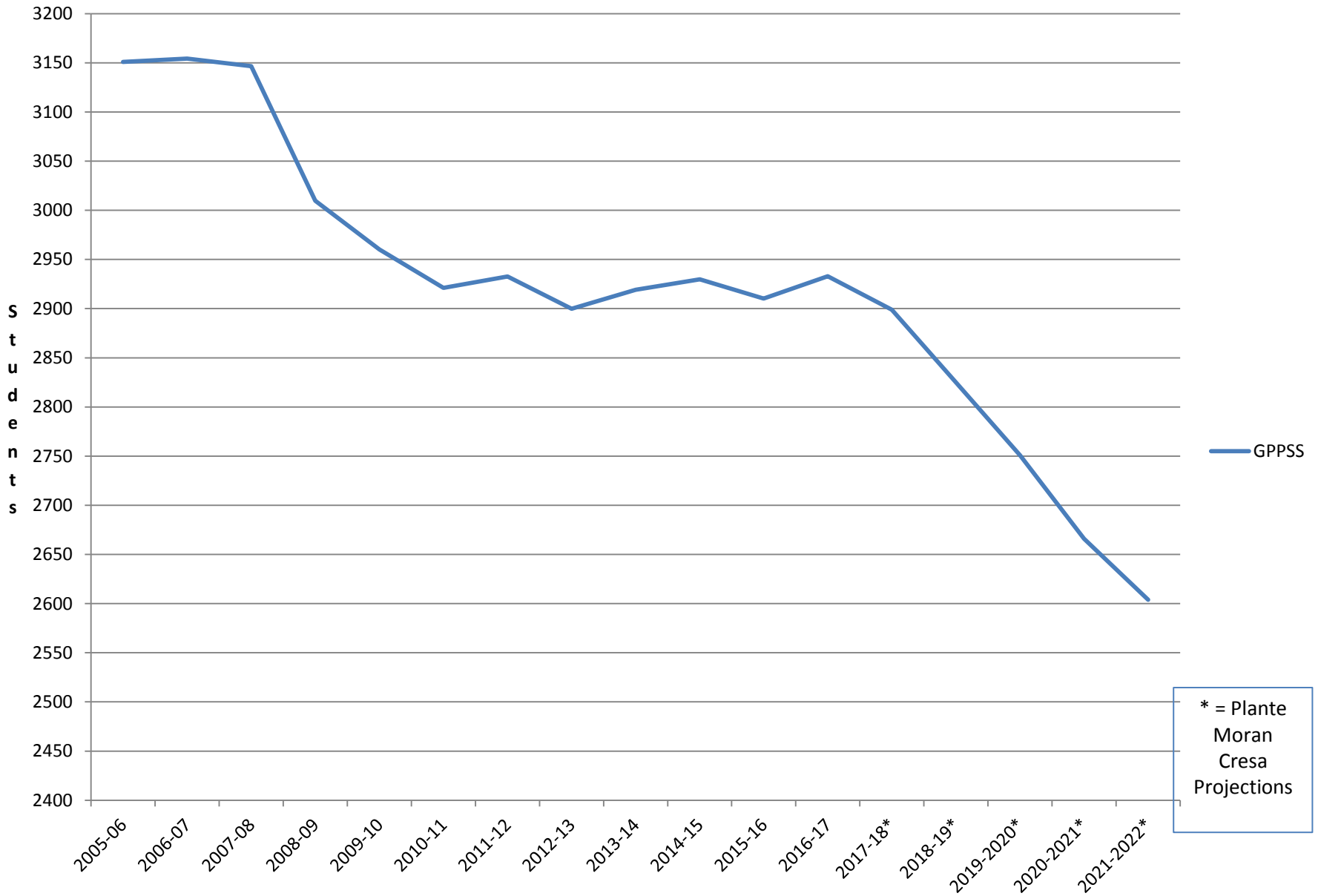
Total High School Enrollment



High School Building Enrollment

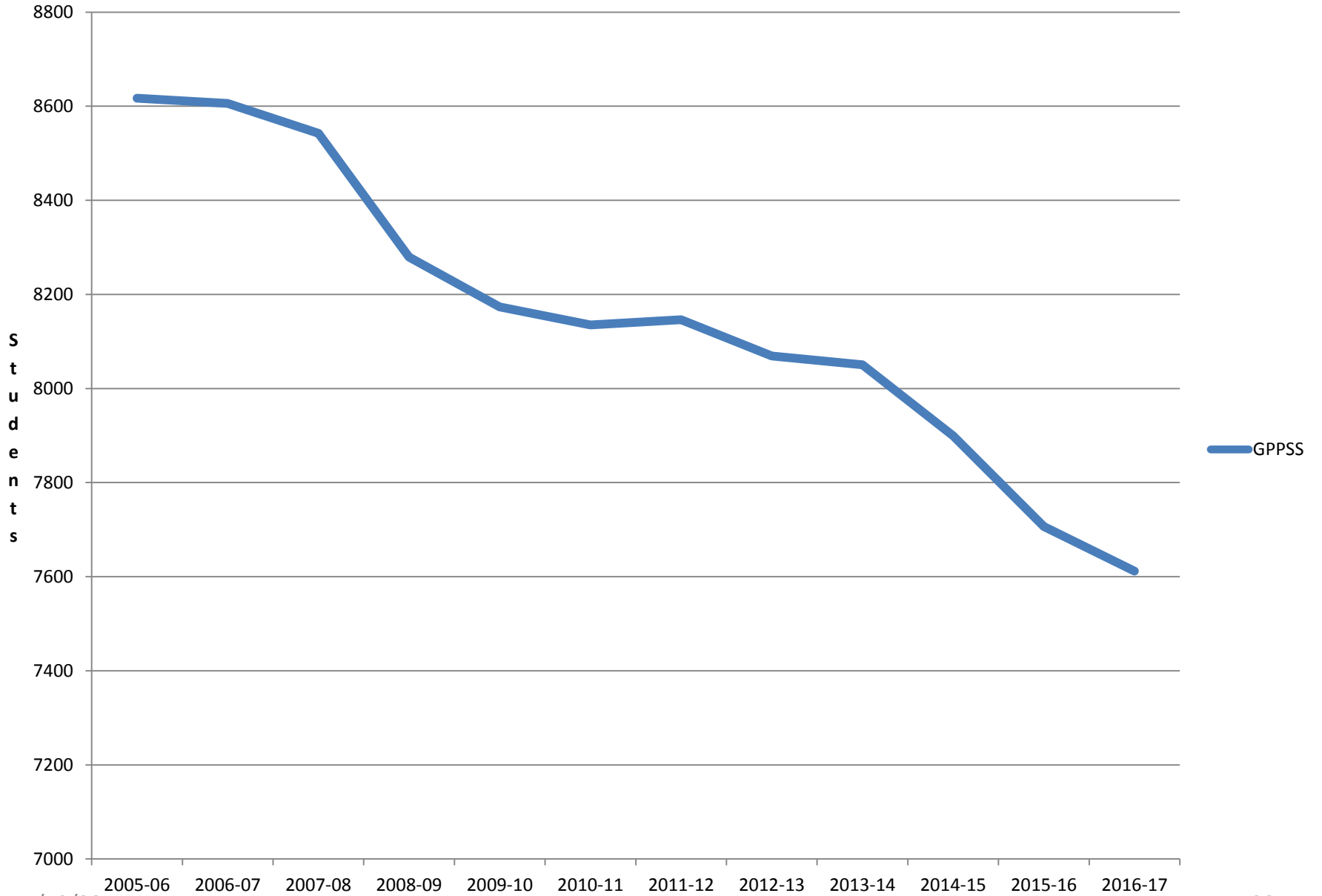


Projected Total High School Enrollment

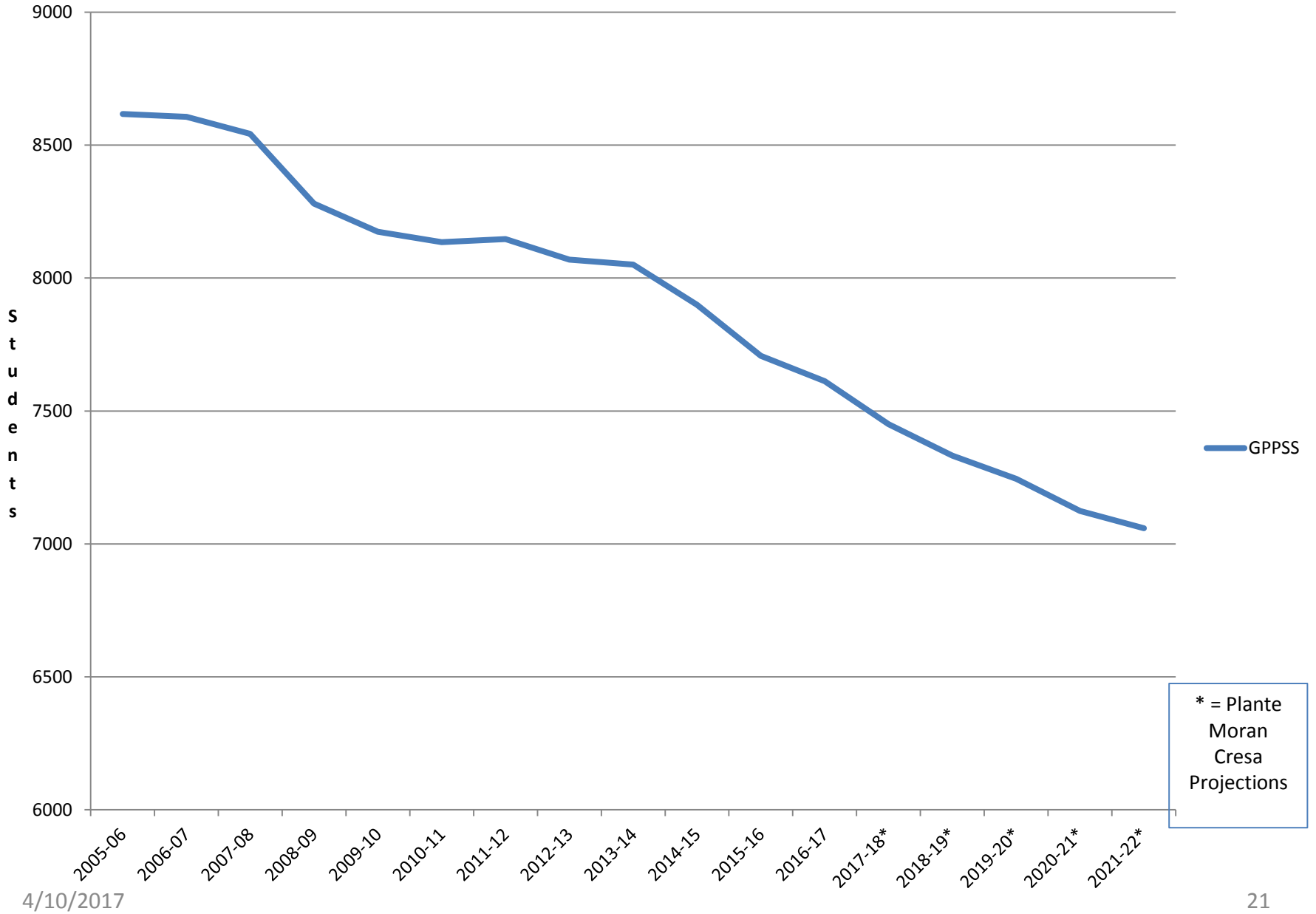


TOTAL DISTRICT ENROLLMENT

GPPSS Total District Enrollment



Projected Total GPPSS Enrollment

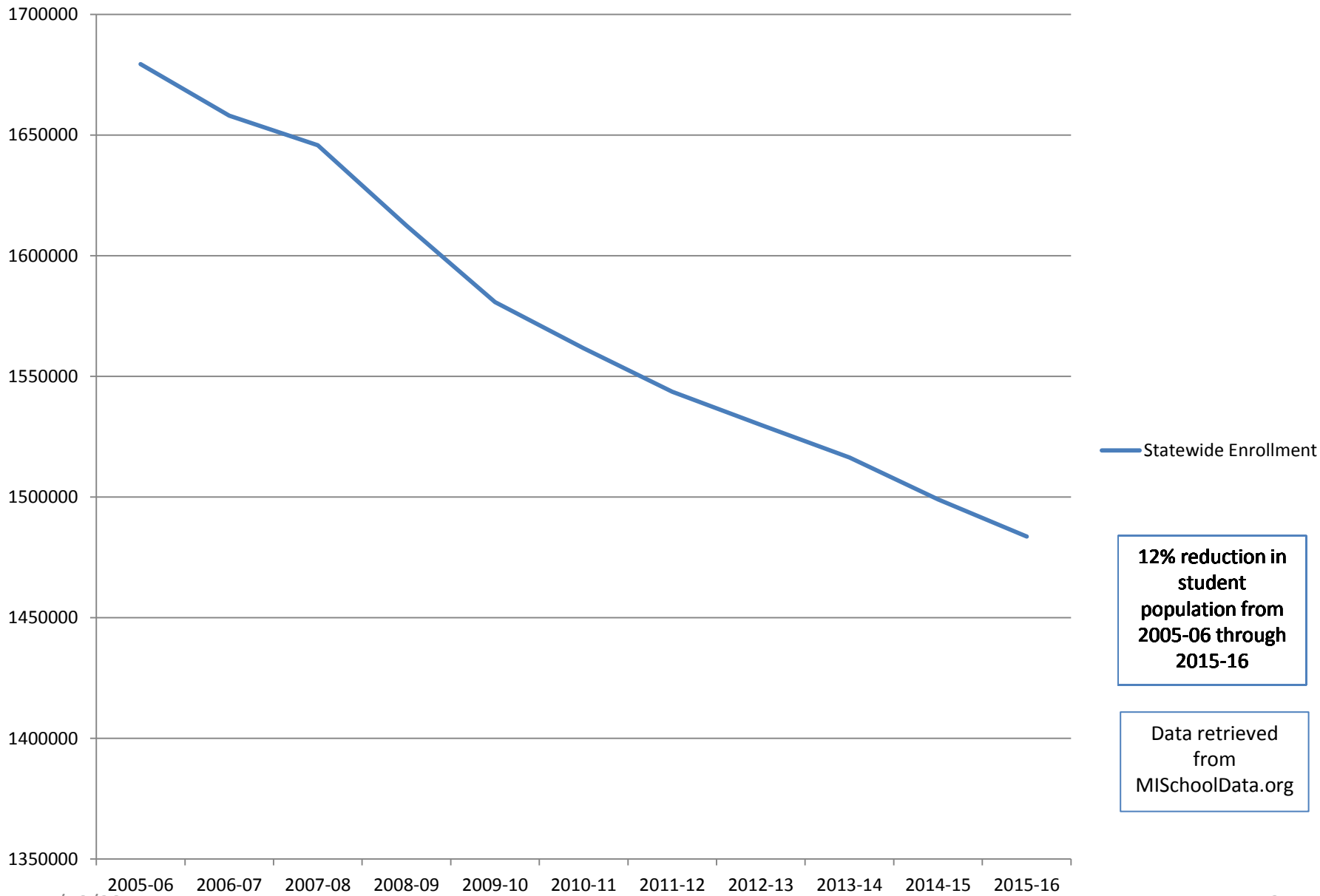


1st Grade Historical Enrollment

Year	Total Students in 1st Grade for Given School Year	2016-17 Grade of that 1st Grade Class
2005-06	594	12th
2006-07	557	11th
2007-08	583	10th
2008-09	553	9th
2009-10	510	8th
2010-11	495	7th
2011-12	503	6th
2012-13	489	5th
2013-14	474	4th
2014-15	472	3rd
2015-16	437	2nd
2016-17	427	1st

STATEWIDE AND PRIVATE/PAROCHIAL ENROLLMENT

Michigan Public K-12 Enrollment



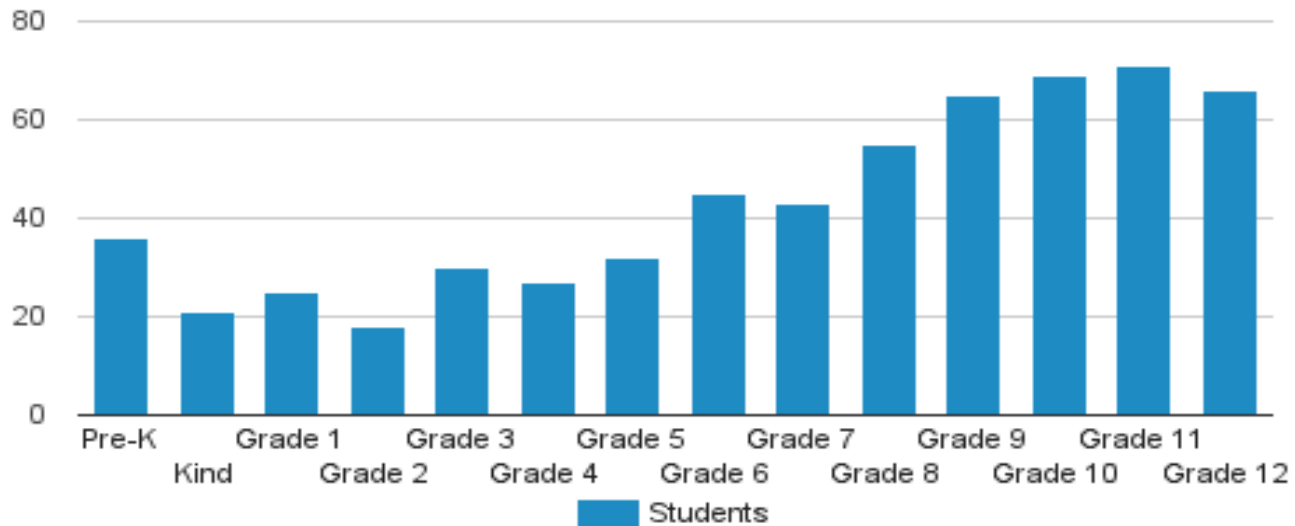
4/10/2017

Local Private/Parochial Enrollment

School	2009-10	2014-15	Percentage Change
Grosse Pointe Academy	225	195	-13%
St. Clare	182	96	-47%
St. Joan	525	446	-15%
St. Paul	454	324	-29%
Star of the Sea	336	246	-27%

Data retrieved from
MISchoolData.org

University Liggett School Enrollment Distribution



Data retrieved from www.privateschoolreview.com