

# Grosse Pointe Public Schools COVID Dashboard

Release Date: February 2, 2021

The purpose of this dashboard is to provide the GPPS Community with an accurate and up-to-date summary of key metrics that measure COVID transmission risk and impact on the local health care system. The dashboard is modelled off the Centers for Disease Control (CDC) Indicators for School Reopening Guide.

The Dashboard includes 3 Core Indicators (metrics):

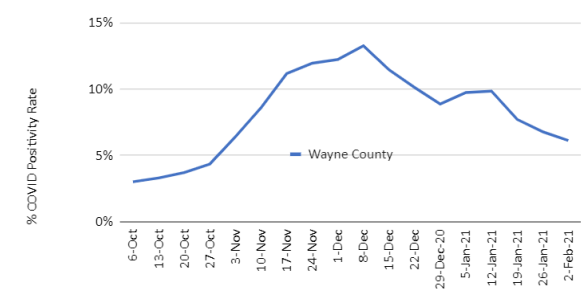
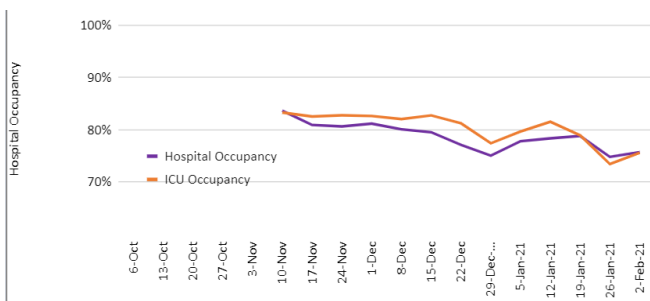
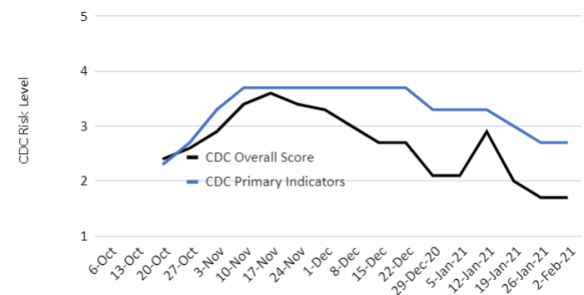
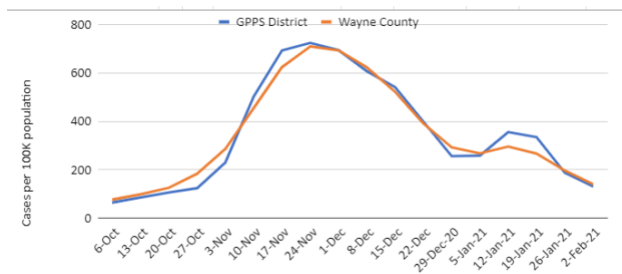
- Current Community COVID case load (All 5 Grosse Pointes and Harper Woods)
- % positive COVID testing rate for Wayne County
- GPPS Risk Mitigation Strategy Level (approved by health department)

As well as additional Secondary Indicators:

- Trends in the Community caseload
- Local hospital use and capacity

Each metric has a corresponding risk level according to the CDC and further converted to a numeric score (1=Lowest risk, 5=Highest) in order to track trends in the risk metrics over time. The purpose of the dashboard is not to set specific reopening thresholds but rather to provide relevant information to decision makers.

CDC Risk Metrics															
Highest	Higher	Moderate	Lower	Lowest											
CDC Core Indicators (as of Feb 2, 2021)							CDC Secondary Indicators (as of Feb 2, 2021)								
# community cases/100K prev 14 days	Risk Level	% Positives prev 7 days (Wayne County)	Risk Level	School Risk Mitigation Strategy Up to 5	Risk Level	Core risk Score Ave of 7 factors 1=Lowest, 5=Highest	Trend: % change in weekly community case rate	Risk Level	Hospital occupancy	Risk Level	% ICU occupancy	Risk Level	% Covid inpatients	Risk Level	Overall risk Score Ave of 7 factors 1=Lowest, 5=Highest
130.9	Higher	6.1%	Moderate	5	Lowest	Lower	-29%	Lowest	76%	Lowest	76%	Lowest	5%	Lowest	Lowest
	4		3		1	2.7		1		1		1		1	1.7



Sources:

CDC Guidelines: <https://www.cdc.gov/coronavirus/2019-ncov/community/schools-childcare/indicators.html>

GP and Harper Woods Case Data:

<https://wayne.maps.arcgis.com/apps/opsdashboard/index.html#/d04fff4645b140319fad972eb3740550>

County Case Counts and Positivity Rate Data: <https://www.mistartmap.info/compare>

Hospital Resources Data: <https://www.michigan.gov/coronavirus/>

GPPS Risk Mitigation Plan: [https://drive.google.com/file/d/1yePrluswKHGx\\_dTnhENUJpFe5pP-Ow62/view](https://drive.google.com/file/d/1yePrluswKHGx_dTnhENUJpFe5pP-Ow62/view)