

GPPSS Update on Return to Full Face-to-Face Instruction Plan

March 22, 2021

Return to Face -to-Face (F2F)

- GP Traditional Elementary students returned to F2F 3/1
- GP Traditional Middle and High School students returned 3/15
- OneGP Virtual will remain virtual through this school year

Return to F2F Framework - Testing

- Participating in the MDHHS program to test staff on a weekly basis
- Participating in MHSAA testing programs for athletes
- Partnered with Wayne Health to offer free community testing for COVID at both North and South during the afternoon of 2/22
- Partnering with Wayne Health to offer free COVID testing at both high schools starting 3/8. Next dates 3/24 and 4/7

March 24 at
GPN & GPS
(next date, April 7)



Free COVID testing
for high school
students

What you need to know:

- | | |
|-------------------------------------------------------------------------|-------------------------------------------------------------------------------------|
| 1 It's the less invasive nasal swab | 4 We need 400-500 students to participate - more is better! |
| 2 Parents must fill out the form for minors - text GPPSS Cares to 48355 | 5 Letting the district receive your results helps us with our mitigation strategies |
| 3 No cost to you | 6 Why? Local data drives decisions to keep us all safe |

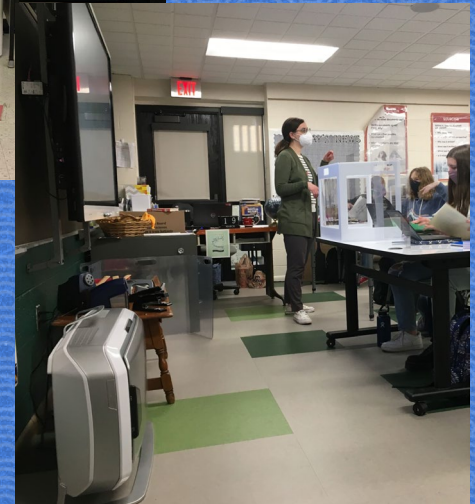
Return to F2F Framework - Vaccinations

- Over 750 staff have been vaccinated (80%)
- Text EndCOVID to 75049 or log onto clinic.meier.com/register/c/2021 to register to receive the COVID-19 vaccination at Ford Field. Registrations will go through the Meijer vaccine registration website.



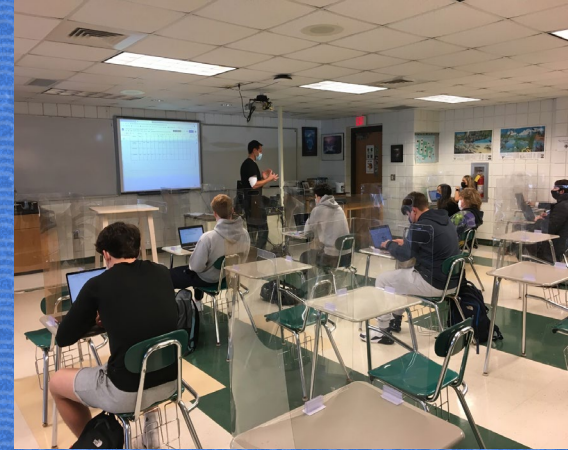
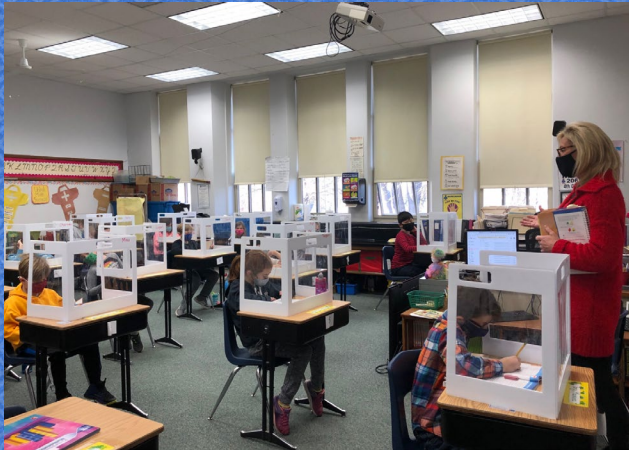
Return to F2F Framework - Air Purification & Ventilation

- Purchased 550 air purifiers, with input from teachers, to supplement the HVAC adjustments already made at each school (filters, damper adjustments, air exchange rate studies)



Return to F2F Framework - Social Distancing

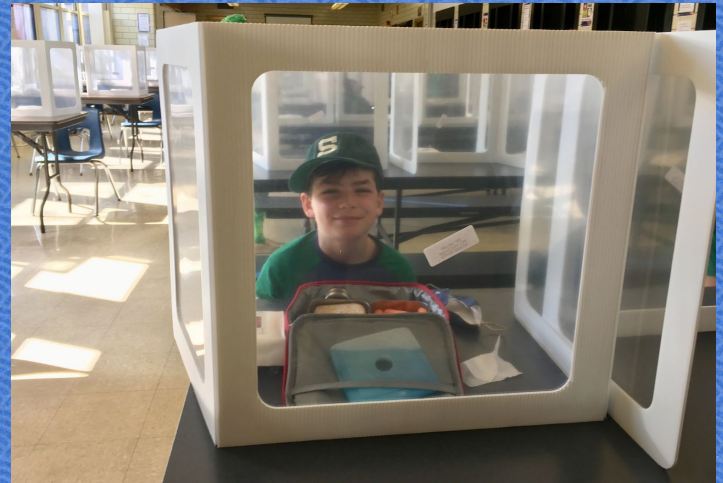
- CDC moving to 3 feet of distancing, WCHD still at 6 feet, GPPSS working for with WRESA to adopt the 3 feet distance for contact tracing
- Maximize social distancing using allowable space
 - Removed desks, bookcases, extra seating, moving classes
- At the HS level lunch is being provided with 6 feet of distancing



Return to F2F Framework - PPE

Personal Safety, Masks & Protective Equipment

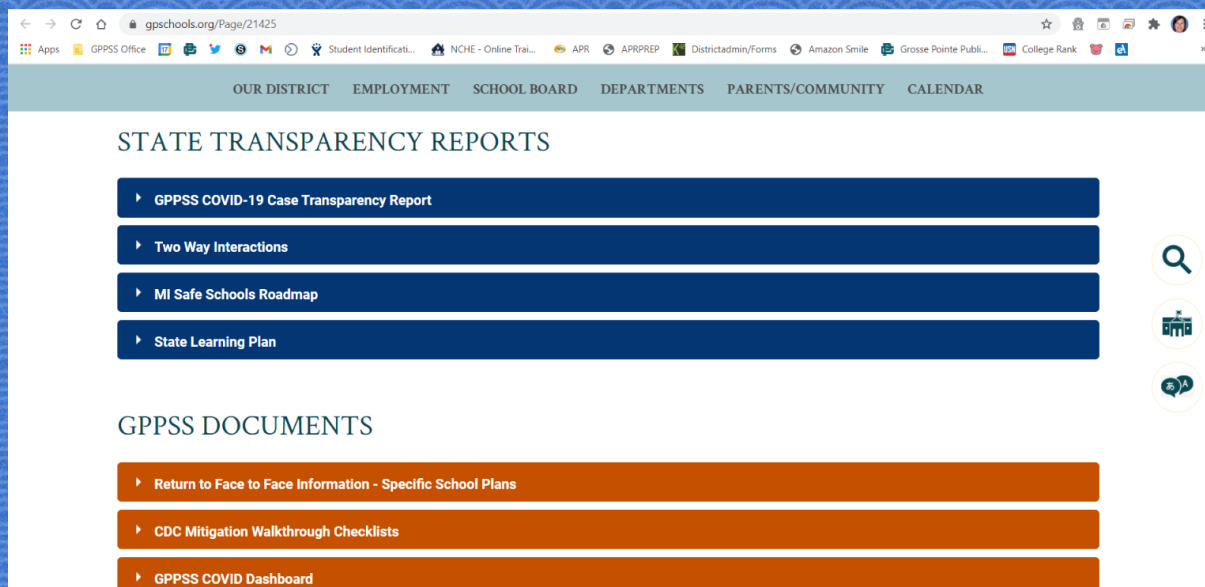
- Disposable surgical masks are available for all staff and students
- Clear desk shields in place and being used at secondary schools
- Mandatory mask use for students and adults when on school property
- Framed shields being used for lunch
- System in place to manage inventory and replenish supplies in schools
- Thank you for donations



CDC Guidance for Reopening School

- Posting updates to the [GPPSS CDC COVID Dashboard](#) reflecting new [Indicators and Thresholds for Community Transmission of COVID](#)
- CDC Checklists and School Plans posted

District News



Contact Tracing

New Daily Screening Tool for Families

- Continue to partner with WCHD to discuss/investigate positive COVID cases
- Communicate with each COVID positive staff member within 4 hours of positive COVID case to determine close contacts (including subs, lunch)
- Partner with each building to track student COVID related absences
- Publish a weekly update of COVID instances in GPPSS on the website
- Students with COVID-related absences have educational plans to support remote learning

COVID-19 Screening Tool for Families

Parents and guardians, use this checklist every day before sending your children to school.

If you answer "YES" to one or more questions, you must keep your child home from school today.

Question 1: Does your child have any **new, unusual, or worsening** symptoms as listed in Box A and Box B below?

Box A

- Fever? (100.4° F or greater)
- Cough?
- Shortness of breath?
- Difficulty breathing?
- Loss of smell or taste?

Does your child have at least 1 of these symptoms?

☐ YES ☐ NO

Box B

- Vomiting or diarrhea?
- Headache?
- Sore throat?
- Runny nose and/or congestion?
- Body aches and/or tiredness?

Does your child have at least 2 of these symptoms?

☐ YES ☐ NO

► If the answer to any of the questions above is "yes", keep your child home and consult your primary care physician. If a doctor determines that the symptoms are due to another diagnosis, or COVID-19 is ruled out, your child may return to school after being fever-free for 24 hours **without** the use of fever-reducing medications.

Question 2: In the last 14 days, has your child been identified as a close contact of anyone who has had a positive COVID-19 diagnostic test? You may answer "NO" if:

- it has been more than two weeks since the child has received the second dose of the COVID-19 vaccine and
- that second dose was received not more than 3 months ago.

☐ YES ☐ NO

► If the answer to this questions is "yes", your child must stay home to quarantine for at least 10 days (the quarantine period may be extended to 14 days by your medical provider or the school depending on your individual circumstances) from the last exposure to the close contact unless symptoms appear. (See section above regarding symptoms in Box 1 and Box 2.)

Question 3: Has your child returned to the U.S. after traveling internationally in the last 7 days?

☐ YES ☐ NO

► If the answer to this questions is yes, your child must stay home to quarantine for 7 days from the date that they returned to the U.S. Then on the seventh day, the child must get a COVID PCR test and have a negative test result before returning to school.

Report any confirmed or suspected cases:

In the City of Detroit:

[Detroit Health Department](#)

Main Communicable Disease Line: (313) 876-4000

After Hours Call Center: (313) 876-4000

Outside the City of Detroit:

[Wayne County Public Health Division](#)

Main Communicable Disease Line: (734) 727-7078

After Hours Call Center: (734) 727-7284

Mary Roman: mroman@waynecounty.com • (734) 727-7150

Noema Wachuk: nwachuk@waynecounty.com • (734) 727-7253

Lukas Ayers: layers@waynecounty.com • (734) 727-7076

02.16.21

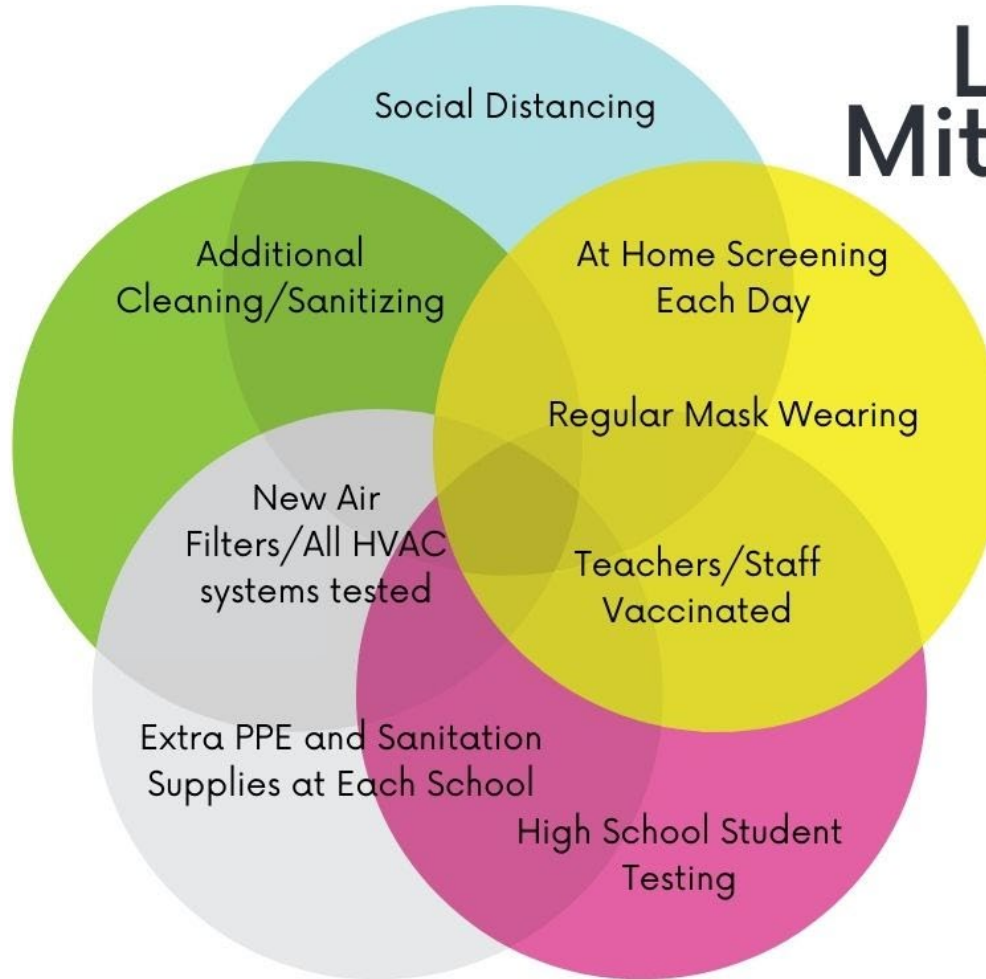
GPPSS Service Delivery Options

GPPSS has demonstrated success in fully remote, hybrid and full F2F.

- As directed by the Governor, MDHHS or WCHD, GPPSS will shift between these three delivery methods.
- At the local level, GPPSS will continue to monitor data on the classroom and school level. As data indicates, individual classrooms or schools would transition between remote/hybrid/full F2F as needed.

GPPSS continues to focus on providing full F2F to all students in a safe environment.

Layered Mitigation



GPPSS is using a layered mitigation plan recommended by the CDC in all of our schools. The purpose of a layered mitigation plan is to overlap multiple protective measures to maintain the safest environment possible.