



Return to School - Fall 2021

Board Presentation
09.13.21

Return to School for Fall 2021

Focus of our plan remains:

- Maximizing **safety** of students and staff during a global pandemic
- Providing robust, meaningful **face-to-face** instruction for all students

Return to School for Fall 2021



Face-to-face instruction: GPPSS will offer full time, face-to-face instruction for all grade levels beginning the first day of school. There will not be any separate cohorts or OneGP Virtual.



Masking in school buildings: Per [emergency order of the WCHD](#), facemasks are required for all students, staff and visitors in all school buildings for grades pre-k through 12, regardless of vaccination status. GPPSS will comply with all WCHD mandates.



Physical Distancing & Lunch Procedures: To the greatest extent possible, all classrooms and lunchrooms will be set up to provide 3 feet of distance between students. Outdoor lunch will be encouraged when weather permits. Classrooms will remove all non-essential furniture. Group time will be limited to less than 15 minutes.

Return to School for Fall 2021



Desk & Face Shields: GPPSS will not require desk shields to be used inside district buildings during class or lunchtime. Desk shields and face shields will be available upon request.



Lockers: GPPSS students will have access to lockers throughout the school day. Information on locker assignments will be provided at registration.



Visitors & Volunteers: Visitors and volunteers will be permitted inside school buildings. All visitors must enter through the office and follow building protocols for check-in. Masks are required for all visitors.

Return to School for Fall 2021



Cleaning, Hygiene & Ventilation: GPPSS will continue to follow strict and thorough cleaning procedures in all district buildings. Regular hand washing is encouraged and hand sanitizer will be easily accessible to students and staff. Our ventilation systems have been updated and will continue to be maintained and run for optimal air quality. GPPSS will require individual air purifiers in classrooms with groups of students regularly assigned and filters will be changed as needed.



Daily Health Screening: GPPSS strongly recommends each student is screened at home before coming to school. Any student who displays symptoms will be sent home immediately. We ask all families to please keep your student home if they show any signs of illness.



Busing: Masks on buses are required by the CDC and will be provided if needed.

Return to School for Fall 2021



Contact Tracing/Reporting/Quarantines: Schools are required to report communicable diseases to their local health department within 24 hours. Positive or probable COVID-19 cases will be reported to the WCHD. When there is a positive or probable case within a classroom, an exposure letter will be sent home to parent(s) or guardian(s). GPPSS is exploring opportunities to provide **voluntary** testing for unvaccinated individuals.



COVID-19 Testing: GPPSS has never required COVID-19 testing for our students and will not require it at this time. In addition, MHSAA has lifted all requirements for student-athlete testing as of June 22, 2021.

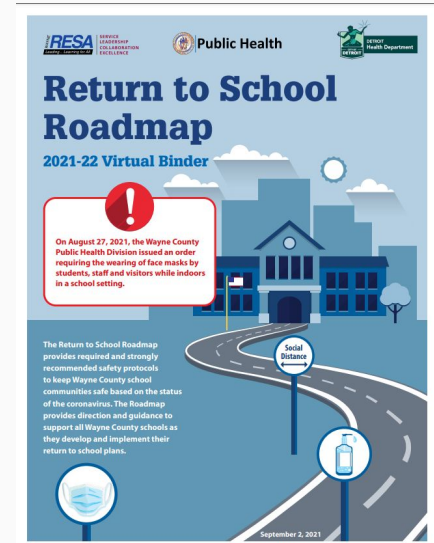


COVID-19 Vaccination: GPPSS strongly recommends all eligible students and staff receive the COVID-19 vaccine. At this time, MDHHS does not require the COVID-19 vaccine. WCHD has offered to provide boosters to staff when available. GPPSS is exploring serving as a site for **voluntary** vaccination clinics with healthcare partners.

Return to School for Fall 2021

Quarantine Protocols

Quarantine protocols are outlined in the [Wayne County Return to School Roadmap](#).



Return to School for Fall 2021

All information is current as of September 13, 2021. All protocols are subject to change based on local COVID-19 infection rates and any federal/state/county mandates.

The administration team will continue to review local COVID data and follow all federal/state/county mandates.

GPPSS COVID-19 Information

- Under “District News” on GPPSS homepage
- Case transparency report updated daily
- GPPSS tracker updated weekly
- Weekly “at-a-glance” updated with tracker numbers

GPPSS District Totals as of September 10, 2021
September 10, 2021 Dashboard

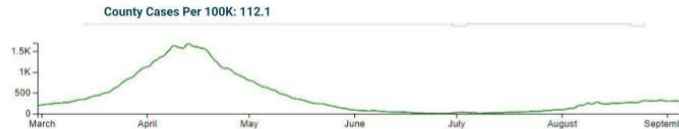


Quarantined Staff	Positive Staff	Quarantined Students	Positive Students
0	3	11	6

ELEMENTARY SCHOOL TOTALS - WEEKLY	
Quarantined Staff	0
Quarantined Students	8
Positive Staff	1
Positive Students	1

MIDDLE SCHOOL TOTALS - WEEKLY	
Quarantined Staff	0
Quarantined Students	3
Positive Staff	2
Positive Students	0

HIGH SCHOOL TOTALS - WEEKLY	
Quarantined Staff	0
Quarantined Students	0
Positive Staff	0
Positive Students	5



This information is a summary of student and staff absences due to a positive COVID situation or a COVID exposure. All data is "as of" the dates indicated. Detailed information by school building can be found on our website under "GPPSS Tracking" at [this link](#).

Helpful Links

[Grosse Pointe Public School System Covid-19 Information](#)

[CDC COVID-19 Data Tracker](#)

[MDHHS COVID-19 Resources](#)

[MHSAA Health & Safety Information](#)

[MiOSHA Homepage](#)

[WCHD COVID-19 Resources](#)

CDC - Centers for Disease Control and Prevention

MDHHS - Michigan Department of Health and Human Services

MiOSHA - Michigan Occupational Safety and Health Admin.

MHSAA - Michigan High School Athletic Association

WCHD - Wayne County Health Department