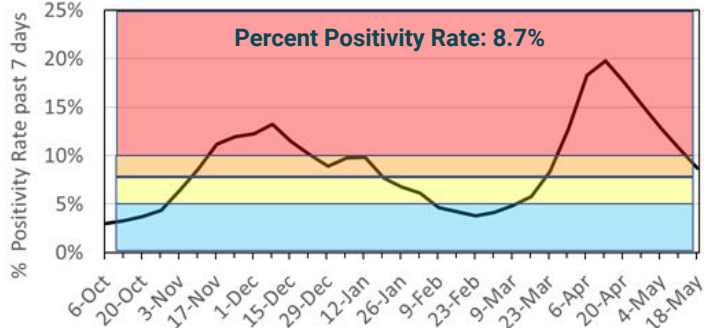
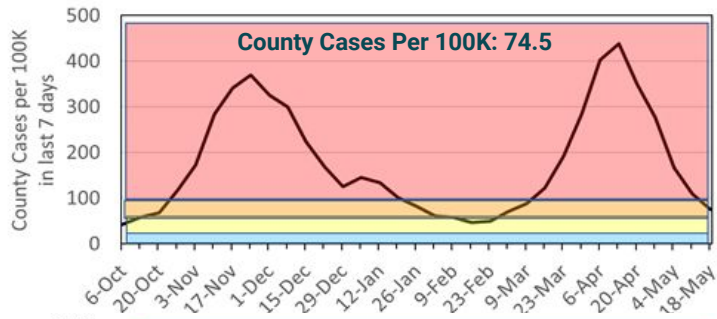


Grosse Pointe Public School System - COVID-19 Weekly Data

May 24, 2021 Dashboard



New CDC Simplified Risk Indicators			
Low	Moderate	Substantial	High
Updated as of May 18, 2021			
County (incl Detroit) cases per 100K in last 7 days	Risk Level	County % Test Positives prev 7 days	Risk Level
74.5	Substantial	8.7%	Substantial

GPPSS District Totals as of May 24, 2021

Quarantined Staff	Positive Staff	Quarantined Students	Positive Students
0	0	26	4

ELEMENTARY SCHOOL TOTALS - WEEKLY

Quarantined Staff	0
Quarantined Students	1
Positive Staff	0
Positive Students	1

MIDDLE SCHOOL TOTALS - WEEKLY

Quarantined Staff	0
Quarantined Students	19
Positive Staff	0
Positive Students	2

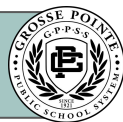
HIGH SCHOOL TOTALS - WEEKLY

Quarantined Staff	0
Quarantined Students	6
Positive Staff	0
Positive Students	1

This information is a summary of student and staff absences due to a positive COVID situation or a COVID exposure. All data is "as of" the dates indicated. Detailed information by school building can be found on our website under "GPPSS Tracking" at [this link](#).

Grosse Pointe Public School System - COVID-19 Weekly Data

May 24, 2021 Dashboard

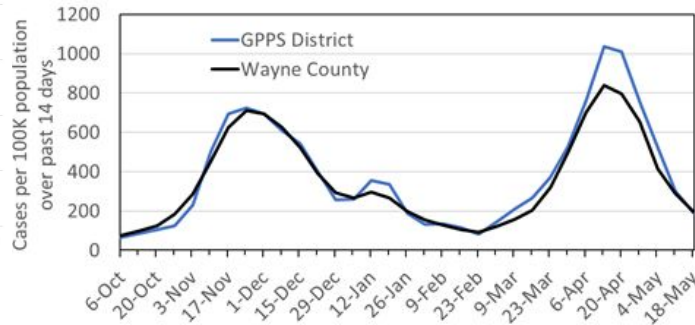
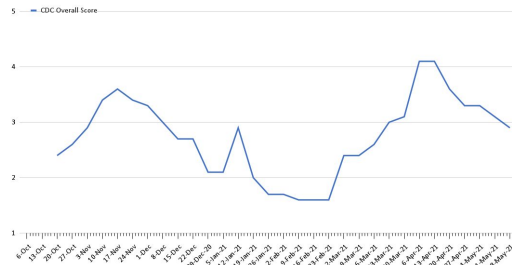


The purpose of this dashboard is to provide the GPPSS Community with an accurate and up-to-date summary of key metrics that measure COVID transmission risk and impact on the local health care system. The dashboard is modeled off of the recently released Centers for Disease Control (CDC) Indicators and Thresholds for Community Transmission of COVID-19 (released February 12, 2021). The Dashboard includes 2 Core Indicators (metrics):

- Total new cases per 100,000 in the past 7 days (slide one)
- % positive COVID testing rate for Wayne County (slide one)

The chart and graphs included provide the current GPPSS score on the two Core Indicators, as well as the district's trend over the past several months on each of these metrics. Given that any one data point can be subject to statistical fluctuation, GPPSS will continue to focus on data trends as an important indicator when making decisions regarding learning options.

CDC Risk Metrics																
CDC Core Indicators (as of May 18, 2021)						CDC Secondary Indicators (as of May 18, 2021)										
# community cases/100K prev 14 days	Risk Level	% Positives prev 7 days (Wayne County)	Risk Level	School Risk Mitigation Strategy Up to 5	Risk Level	Core risk Score Ave of 7 factors 1=Lowest, 5=Highest	Trend: % change in weekly County case rate	Risk Level	Hospital occupancy	Risk Level	% ICU occupancy	Risk Level	% Covid inpatients	Risk Level	Overall risk Score Ave of 7 factors 1=Lowest, 5=Highest	
197.9	Higher	8.7%	Higher	3	Moderate	Moderate	-46%	Lowest	82%	Moderate	82%	Moderate	6.4%	Lower	Lower	
	4		4		3	3.7		1		3		3		2	2.9	



Sources:

CDC Operational Strategy for K-12 Schools:
<https://www.cdc.gov/coronavirus/2019-ncov/community/schools-childcare/operation-strategy.html>

GP and Harper Woods Case Data:
<https://wayne.maps.arcgis.com/apps/opsdashboard/index.html#/d04fff4645b140319fad972eb3740550>

County Case Counts and Positivity Rate Data:
<https://www.mistartmap.info/compare>