

GPPSS Return to Face to Face Instruction for GPPSS Traditional Presentation

September 25, 2020

Please Note the Following:

- This is a revised document that is subject to change based on feedback, further governmental guidance and new information on local COVID-19 data
- Young 5-5th grade students are the focus of this plan
- Specific plans for 6th-12th graders will be provided in the coming weeks
- This plan does not replace, but coincides with, the updated plan for return to instruction for students with IEPs
- This plan applies to all GP Traditional Students
- OneGP Virtual students will continue to receive instruction in a virtual environment

Significant Revisions:

Following both the staff and community town halls administration reviewed all feedback received and made the following changes to the initial plan:

- Changed the days the students attend F2F instruction to better accommodate child care needs for families
- The new schedule described in this plan indicates Cohort A will attend school M-Th and every other W, while Cohort B will attend T-F and every other W
- Commits to the concept that an earlier transition to F2F for our students new to a building beyond 5th grade (meaning 6th and 9th graders) will be included in the 6th-12th grade return to F2F plan

Charge from the Board of Education President:

At the 9/14 Board of Education meeting President Margaret Weertz directed administration to provide a detailed plan to return students to school in a safe, face-to-face (F2F) environment.

Following this direction, administration reviewed the work of the GPPSS Reopening Task Force, our local safety data, and school reopening plans in other districts. This draft plan is the result of that work.

For the GPPSS Return to F2F Plan:

- This plan recognizes that the charge from the BOE and the demand from our community is to maximize student/teacher F2F opportunities
- F2F opportunities may differ for students based on their needs
- While in Phase 4, GPPSS will use a hybrid approach to reduce class sizes and allow for social distancing opportunities
- GPPSS will use a phased return that builds toward all students having a F2F opportunity
- GPPSS phased approach will begin with our youngest and most at-risk learners
- Building community, literacy, and numeracy will be our core focus in F2F instruction
- According to the [Governor's Plan](#), when we reach Phase 5, GPPSS will accelerate the timeline and shift from hybrid to full time F2F instruction in the buildings

Return to F2F Timeline (subject to change):

- **Monday, October 12th** - Young Five, kindergarten, 1st and 2nd grade students return to F2F hybrid learning
- **Monday, October 19th** - 3rd, 4th and 5th grade students return to F2F hybrid learning
- **Monday, November 9th** - 6th-12th grade students return to F2F hybrid learning (more information to come)

Please note - this timeline is subject to change based on new information

*Families of students with IEPs-please review the [Updated Special Education Return Plan 2020](#)

Hybrid Return to F2F Format for Grades Young 5 - 4th Grade:

- Students divided, primarily by alphabet (allowing families to stay together), into two groups identified as Group A and Group B
- Students attend school F2F, by group, using an every other day format
 - ◆ Cohort A: M - Th and every other W
 - ◆ Cohort B: T - F and every other W
- Students would attend full days when they have a F2F day
- School hours would start at 8:30 a.m. with school ending at 2:30 p.m. daily
- On days when the students are not in F2F instruction they would have asynchronous learning opportunities
- Students with IEP's indicating "Resource Program" &/or ancillary "services" will receive in person programs and services according to the student's Contingency Learning Plan (CLP), on days they are scheduled in the building

Hybrid Return to F2F Format for 5th Grade:

- School hours would start at 8:15 a.m. with school ending at 2:15 p.m. daily
- Students divided, primarily by alphabet (allowing families to stay together), into two groups identified as Group A and Group B
- Students attend full days, by group, when they have a F2F day
- On days when the students are not in F2F instruction they would have asynchronous learning opportunities
- Students with IEPs will receive in person programs and services according to the student's Contingency Learning Plan (CLP), on days they are scheduled in the building

Y5 to 5th Grade Student Safety Precautions:

- All students & staff will wear masks except when eating/drinking/outside
- Staff will be provided necessary, appropriate PPE (masks, shields, etc.)
- Social distancing will be maintained using smaller class sizes (no greater than 15 students, with the average class size being 10 students)
- Larger spaces will be used by students when possible
- Students will work at individual work stations either at individual desks or at opposite ends of tables
- Students will be provided a personal 'foldable' shield when at tables
- Students will typically spend the day with only their cohort of students
- Students will do activities together, lunch, recess, etc. as a cohort
- Special education service providers will "push in" to support students in their cohort when possible, to maintain cohorts and minimize exposure



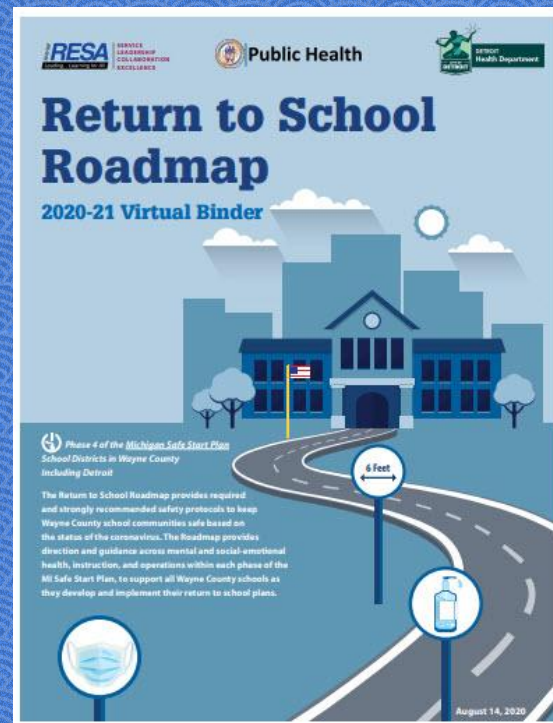
Y5 to 5th Grade Student Safety Precautions (continued):

- Regular hand washing will occur with all students
- Common touchpoints in bathrooms, etc. will be wiped down throughout the day
- Each building will be thoroughly cleaned each evening
- Building specific safety procedures (entry, exit, etc.) will be provided
- Visitors will be restricted to main office for necessary visits only
- No volunteers will be permitted at school
- Food service will be provided directly to the classroom
- Typically during recess students will be restricted from interacting with students outside of their cohort



School Response to COVID-19 Exposure:

Per directions from the Michigan Safe Schools Roadmap decisions regarding student and staff health precautions regarding positive cases or exposure to COVID-19 GPPSS will follow guidance and direction from WRESA and the Wayne County Health Department (photo links to document). The following two slides outline six specific scenarios provided by the county that will be used to ensure the safety of all students and staff.



WRESA Safe Start Plan Section VI: COVID-19 Scenarios

Student/Staff Within School is: Confirmed COVID-19 Positive, Symptomatic Pending Test, Identified as Close Contact

► Scenario 1

A student/staff member within the school is confirmed to have COVID-19

✗ The student/staff member AND all household members of the student/staff member are immediately **excluded from school** until:

- 10 days since symptoms first appeared; AND
- At least 24 hours with no fever ($>100.4^{\circ}\text{F}$) (without the use of fever-reducing medication) AND
- Symptoms have improved (e.g. cough, shortness of breath, diarrhea etc.)

The confirmed positive student/staff member is instructed to isolate at home.

Household members, classmates, and teachers who have been within 6 feet of the person for at least 15 minutes of the isolated student/staff person who are close contacts are excluded for 14 days after their last date of close contact with the positive case.

► Scenario 2

A student/staff member within the school is symptomatic and pending COVID-19 test results

✗ The student/staff member is excluded from school while awaiting test result.

The student/staff person must be **excluded from school** until:

- They obtain a negative test result; AND
- They are symptom-free for 24 hours without the use of medications prior to returning to school.

Household members, classmates, and teachers of the pending case should be monitored for symptoms while waiting for test results. If symptoms develop, they should call their medical provider to be tested for COVID-19. These individuals are not excluded from school at this point.

A student or staff member who is symptomatic, but refuses to be tested is considered to have had a positive test result.

If test result is positive, see Scenario 1.

► Scenario 3

A student/staff member within the school is identified as a "close contact" to a confirmed COVID-19 case

✗ The student/staff member is immediately **excluded from school** until:

- 14 days since last date of exposure to person who tested positive

The "close contact" is instructed to quarantine at home.

Household members, classmates, and teachers of the quarantined student/staff member may continue to attend school and should monitor for symptoms. If symptoms develop, they are instructed to call a medical provider and get tested for COVID-19 and follow the guidance under Scenario 2.

WRESA Safe Start Plan Section VI: COVID-19 Scenarios

Household Member of a Student/Staff Within School is: COVID-19 Positive, Symptomatic Pending Test, Identified as Close Contact

► Scenario 4

Household member of a student / staff member within the school has been confirmed to have COVID-19

✗ The student / staff member who lives in the same house as a COVID-19 positive person is **excluded from school** and will self-quarantine until:

14 days have passed after the last date of close contact with the household member.

► Scenario 5

Household member of a student / staff member within the school is both symptomatic and is a “close contact” of a COVID-19 positive case and is pending test

✗ Students/staff members who live in the same household of a household member who is both symptomatic, and is a close contact of a COVID-19 positive case and that household member is waiting on COVID-19 test results, is **excluded from school**.

If the household member is positive, see Scenario 4. If the household member is negative, student can return to school.

► Scenario 6

Household member of a student / staff member within the school is a “close contact” to a known positive COVID-19 case

✓ Student can **remain in school** and is monitored for COVID-19 symptoms.

If COVID-19 symptoms develop in the household member, they are instructed to call a medical provider and get tested for COVID-19 and must be excluded from school, and treated as in Scenario 5 pending results.

Daily Health Screening for Students:

- WTVS our local PBS station has created a short 30-second [PSA](#) for families highlighting how to conduct a daily home health screen for students.
- WRESA has provided a daily home health screening checklist that also provides families guidance regarding how to conduct a daily health screening

COVID-19 Screening Tool for Families

Parents and guardians, use this checklist every day before sending your children to school.

If you answer "YES" to one or more questions, you must keep your child home from school today.

Does your child have any unusual symptoms from the list below?

- | YES | NO | |
|--------------------------|--------------------------|--|
| <input type="checkbox"/> | <input type="checkbox"/> | A fever? (Temperature greater than 100.4° F) |
| <input type="checkbox"/> | <input type="checkbox"/> | A new or worsening cough? |
| <input type="checkbox"/> | <input type="checkbox"/> | Shortness of breath/difficulty breathing? |
| <input type="checkbox"/> | <input type="checkbox"/> | Runny nose and/or congestion? |
| <input type="checkbox"/> | <input type="checkbox"/> | Body aches and/or tiredness? |
| <input type="checkbox"/> | <input type="checkbox"/> | Vomiting and/or diarrhea? |
| <input type="checkbox"/> | <input type="checkbox"/> | New loss of smell or taste? |

If the answer to any of the questions above is "yes," keep your child home and consult your primary care physician. If a doctor determines that the symptoms are due to another diagnosis, or COVID-19 is ruled out, your child may return to school after being fever-free for 24 hours without the use of fever-reducing medications.

- | | | |
|--------------------------|--------------------------|---|
| <input type="checkbox"/> | <input type="checkbox"/> | Have you or your child had close contact with anyone who had a positive COVID-19 diagnostic test in the past 14 days? |
| <input type="checkbox"/> | <input type="checkbox"/> | Have you or your child traveled out of the US in the last 14 days? |

If the answer is "yes" to either of these questions, you and your child must stay home to quarantine for 14 days since last contact or return to US.

Report any confirmed or suspected cases:

In the City of Detroit:

[Detroit Health Department](#)

Main Communicable Disease Line: (313) 876-4000

After Hours Call Center: (313) 876-4000

Dr. Benetia Young: [mydetroitmi.gov](#) - (313) 590-7800

Sarned Reiss: [mydetroitmi.gov](#) - (313) 728-1315

Outside the City of Detroit:

[Wayne County Public Health Division](#)

Main Communicable Disease Line: (734) 727-7078

After Hours Call Center: (734) 727-7284

Mary Roman: [mywaynecounty.com](#) - (734) 727-7158

Norma Waduk: [mywaynecounty.com](#) - (734) 727-7253

Lukas Ayers: [mywaynecounty.com](#) - (734) 727-7006



Y5 to 5th Grade F2F Instructional Day:

- Focus on building community, literacy and numeracy
- Classroom teachers will use our typical outstanding learning practices with students
- Due to lowered class sizes, teachers will be able to better individualize and support all learners
- During teaming, *teachers* will rotate to classes whenever possible, not the students
- GPPSS is partnering with The Grosse Pointe Foundation for Public Education to provide reduced-cost Kids Club Centers for remote learning for families needing childcare around F2F learning

Non - F2F Y5 to 5th Grade Instructional Day:

- Y5-5th Grade Specials/Electives will be offered virtually on non-F2F days (focuses F2F time on building community, literacy and numeracy)
- Students will have the opportunity to engage with material assigned/provided by the teacher on a F2F instructional day
- Students will use technology based learning resources (Imagine/Freckle math, Lexia, etc.) to support learning
- Amplify science will be primarily used with students in an asynchronous environment
- Students, on a case by case basis, may be provided with additional in person supports, on an asynchronous day

Options for Grades Y5 - 5th Grade:

If a current Young Five's - 5th grade GP Traditional family is not ready to pivot using the timeline above, they will be provided an opportunity to enter OneGP Virtual. When entering OneGP Virtual the student will change to a different teacher from the one that they had in GP Traditional.

If a current family wants to be considered for a shift from OneGP Virtual to GP Traditional at this time they will have an opportunity to submit that request.

During the week of September 28th families will have an opportunity to request a change of placement between OneGP Virtual and GP Traditional.

This shift between programs is only available in grades Y5-5th grade.

The Role of Metrics in GPPSS Decision Making:

The [Michigan Department of Health and Human Services \(MDHHS\)](#) [provided guidance on September 16th](#) regarding how schools should pivot when positive COVID-19 cases are identified (linked).

The matrix from that memo showing how various COVID-19 positive cases impact Risk Determination is on the next slide.

September 16 MDHHS Matrix

		School Building and District Spread Indicators (A)		
		No cases in school buildings	Building(s) with known cases (C) in staff or students but no ongoing transmission	Building(s) with evidence of ongoing transmission (C)
County Level Risk Determination (B)	Low	In person with mitigation measures	In person with strict mitigation measures after cleaning/contact tracing (D)	In person with strict mitigation in affected buildings with cases after an appropriate pause (E)
	Medium	In person with strict mitigation measures	In person with strict mitigation measures after cleaning/contact tracing (D)	In person with strict mitigation in affected buildings with cases after an appropriate pause (E)
	Medium-High	In person with strict mitigation measures	In person with strict mitigation measures after cleaning/contact tracing (D)	Consider reduced density in affected buildings with cases after an appropriate pause (E)
	High	In person with strict mitigation measures. Discuss additional innovative mitigation strategies with the local health department.	Consider reduced density in affected buildings after cleaning/contact tracing (D). Discuss additional innovative mitigation strategies with the local health department.	Consider reduced density in affected buildings with cases after an appropriate pause (E). Discuss additional innovative mitigation strategies with the local health department.
	Very High	Consider reduced density with strict mitigation measures. Discuss additional innovative mitigation strategies with the local health department.	Consider reduced density in affected buildings after cleaning/contact tracing (D). Discuss additional innovative mitigation strategies with the local health department.	Consider remote instruction in the affected building(s) for twenty eight days.
	Highest	Consider appropriate pause (14 days) of in person instruction in entire district to discuss additional strategies for protecting student and staff, including but not limited to testing strategies	Consider remote instruction in entire district	Consider remote instruction in entire district

Feedback Steps Pursued:

- A virtual town hall was held with staff Tuesday, September 22 to review this plan and obtain feedback.
- A livestreamed community town hall was held on Thursday, September 24. Community members posed questions in advance of or during the town hall via a link on the website. The town hall was livestreamed as is available for viewing on the website.
- GPPSS will continue to listen to our staff and community as this plan is further developed and adjusted.