

GPPSS Secondary Return to Face to Face Instruction

November 9th, 2020

Plan Revisions Based on New Information

- Due to the current Wayne County Health Department rating (level E) coupled with our current GP related COVID situation (over 220 students in quarantine as well as 47 staff members) GPPSS has placed all students in a remote learning environment as of Monday, November 9th.
- GPPSS is still committed to returning our students to a face-to-face environment. This proposal is still relevant since it will allow our community to understand what a return to face-to-face instruction will look like.
- Additionally, based on feedback from our students, community, staff and other data points we will be revising our remote learning delivery structure for students and staff on Monday, November 16th. These changes are included in this presentation.

Please Note the Following

- This is a draft document that is subject to change based on feedback, further governmental guidance, and new information regarding local COVID-19 data
- Grades 6 - 12 students are the focus of this plan
- This plan adjusts 5th grade in terms of attendance and hours to align with grades 6 - 8
- This plan does not replace, but coincides with, the updated plan for return to instruction for students with IEPs
- This plan applies to all GP Traditional and OneGP Virtual Students

Charge from the Board of Education President

At the 9/14 Board of Education meeting President Margaret Weertz directed administration to provide a detailed plan to return students to school in a safe, face-to-face (F2F) environment. Following this direction, administration took the following steps to inform the plan that follows:

- Reviewed the work of the GPPSS Reopening Task Force, our local safety data, and school reopening plans in other districts
- In late September, GPPSS shared with first our staff and then our community a draft plan to return grades Y5 - 5th grade students to a F2F environment
- Central office administrators met for listening sessions with the teacher leadership teams at each of our secondary schools
- Hanover Research conducted a survey of our 5th -12th grade students to receive their feedback on remote learning
- Reviewed the reopening plans of our peer districts

For the GPPSS Return to F2F Plan

- This plan recognizes that the charge from the BOE and the demand from our community is to maximize student/teacher Face to Face (F2F) opportunities.
- F2F opportunities may differ for students based on their needs.
- It is the intent of GPPSS to return to F2F instruction, first in a hybrid environment, when it is safe to do so.
- This plan recognizes that currently COVID-19 infections rates and hospitalizations are a continued point of concern and may result in GPPSS pivoting as needed based on guidance from the MDHHS and other health agencies.

Safety

The first consideration for:

→ Students

→ Staff

→ Families

Secondary Student Safety Precautions

- All students & staff are required to wear masks when on school property.
- When eating or drinking, students/staff will be instructed to remove masks for the minimum amount of time needed (i.e. if drinking from water bottle, they will pull mask up, sip, then adjust to ensure nose and mouth are covered).
- Staff will be provided with PPE (masks, shields, hand sanitizer, etc.).
- Specific PPE will be provided for wind instruments.
- Disposable masks will be provided to students for choir class.
- Physical distancing will be maintained using smaller class sizes & larger classroom spaces.
- Signs and floor stickers will be placed throughout the building to indicate proper physical distancing; students will stay to the right when walking in halls and/or on the stairs.
- Students will work at individual desks or at opposite ends of tables.
- Classroom sets of personal 'foldable' shields will be provided.
- Staff will maintain 6 feet between themselves & students as much as possible.



Secondary Student Safety Precautions (continued)

- Common touchpoints in bathrooms, classrooms, etc. will be wiped down at least every four hours.
- Each building will be thoroughly cleaned each evening.
- Building specific safety procedures-entry/exit doors, masks, hallway/passing time, lunch etc. will be provided in the near future.
- Visitors will be restricted to main office for necessary visits only.
- Volunteers will not be permitted at school.
- Each student will be provided and will use a sanitizing wipe for desk/table surface at the start of each class.
- Students/staff will be instructed to use hand sanitizer (w/70% alcohol) when hand washing is not feasible, before/after touching any shared materials and upon entry into any new space.
- Locker use will be limited to before and after school as well as prior to lunch.
- High school students with 1st, 4th, 5th and 7th hour tutorial may have options to attend tutorial virtually.

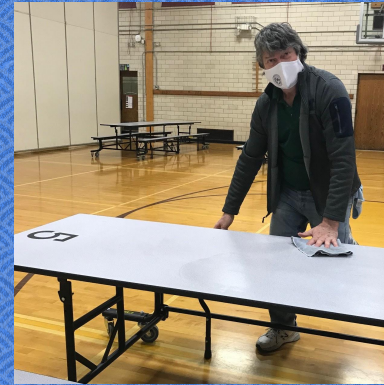


UPSTAIRS



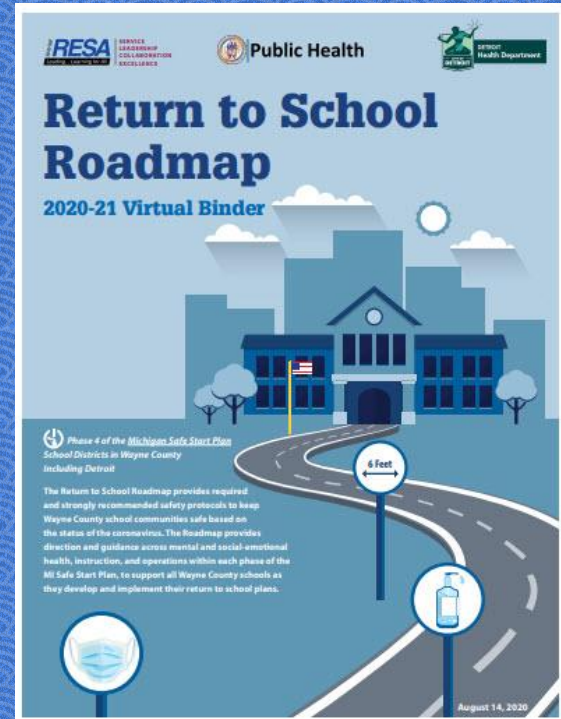
Grade 5th - 8th Grade Lunch Procedures

- Lunch will occur in large spaces (cafeterias, gyms, etc.) using 6 feet of physical distancing.
- Specific lunch room capacity will be set at 50% of the overall room capacity.
- Multiple lunch hours will be used to reduce the number of students in one space at one time.
- Students will use a sanitizing wipe to clean their eating area before and after lunch.
- Families can pick their student up for lunch.
- Students will be assigned to tables by grade.
- An outdoor tent will be provided for students who may wish to eat outside.
- Middle school students will have an outdoor recess opportunity (weather permitting).



School Response to COVID-19 Exposure

Per directions from the Michigan Safe Schools Roadmap decisions regarding student and staff health precautions regarding positive cases or exposure to COVID-19 GPPSS will follow guidance and direction from WRESA and the Wayne County Health Department (photo links to document). The following two slides outline six specific scenarios provided by the county that will be used to ensure the safety of all students and staff.



WRESA Safe Start Plan Section VI: COVID-19 Scenarios

**Student/Staff Within School is:
Confirmed COVID-19 Positive,
Symptomatic Pending Test,
Identified as Close Contact**

**Further clarification from
Wayne County Health regarding
students with COVID symptoms**

► Scenario 1

A student/staff member within the school is confirmed to have COVID-19

✘ The student/staff member AND all household members of the student/staff member are immediately **excluded from school** until:

- 10 days since symptoms first appeared; AND
- At least 24 hours with no fever (>100.4°F) (without the use of fever-reducing medication) AND
- Symptoms have improved (e.g. cough, shortness of breath, diarrhea etc.)

The confirmed positive student/staff member is instructed to isolate at home.

Household members, classmates, and teachers who have been within 6 feet of the person for at least 15 minutes of the isolated student/staff person who are close contacts are excluded for 14 days after their last date of close contact with the positive case.

► Scenario 2

A student/staff member within the school is symptomatic and pending COVID-19 test results

✘ The student/staff member is excluded from school while awaiting test result.

The student/staff person must be **excluded from school** until:

- They obtain a negative test result; AND
- They are symptom-free for 24 hours without the use of medications prior to returning to school.

Household members, classmates, and teachers of the pending case should be monitored for symptoms while waiting for test results. If symptoms develop, they should call their medical provider to be tested for COVID-19. These individuals are not excluded from school at this point.

A student or staff member who is symptomatic, but refuses to be tested is considered to have had a positive test result.

If test result is positive, see Scenario 1.

► Scenario 3

A student/staff member within the school is identified as a "close contact" to a confirmed COVID-19 case

✘ The student/staff member is immediately **excluded from school** until:

- 14 days since last date of exposure to person who tested positive

The "close contact" is instructed to quarantine at home.

Household members, classmates, and teachers of the quarantined student/staff member may continue to attend school and should monitor for symptoms. If symptoms develop, they are instructed to call a medical provider and get tested for COVID-19 and follow the guidance under Scenario 2.

WRESA Safe Start Plan Section VI: COVID-19 Scenarios

Household Member of a Student/Staff Within School is: COVID-19 Positive, Symptomatic Pending Test, Identified as Close Contact

► Scenario 4

Household member of a student / staff member within the school has been confirmed to have COVID-19

✘ The student / staff member who lives in the same house as a COVID-19 positive person is **excluded from school** and will self-quarantine until:

14 days have passed after the last date of close contact with the household member.

► Scenario 5

Household member of a student / staff member within the school is both symptomatic and is a “close contact” of a COVID-19 positive case and is pending test

✘ Students/staff members who live in the same household of a household member who is both symptomatic, and is a close contact of a COVID-19 positive case and that household member is waiting on COVID-19 test results, is **excluded from school**.

If the household member is positive, see Scenario 4. If the household member is negative, student can return to school.

► Scenario 6

Household member of a student / staff member within the school is a “close contact” to a known positive COVID-19 case

✔ Student can **remain in school** and is monitored for COVID-19 symptoms.

If COVID-19 symptoms develop in the household member, they are instructed to call a medical provider and get tested for COVID-19 and must be excluded from school, and treated as in Scenario 5 pending results.

Daily Health Screening for Students

- WTVS our local PBS station has created a short 30-second [PSA](#) for families highlighting how to conduct a daily home health screen for students.
- WRESA has provided a daily home health screening checklist that also provides families guidance regarding how to conduct a daily health screening (on Peachjar & website)

COVID-19 Screening Tool for Families

Parents and guardians, use this checklist every day before sending your children to school.

If you answer "YES" to one or more questions, you must keep your child home from school today.

Does your child have any unusual symptoms from the list below?

- | YES | NO | |
|--------------------------|--------------------------|--|
| <input type="checkbox"/> | <input type="checkbox"/> | A fever? (Temperature greater than 100.4° F) |
| <input type="checkbox"/> | <input type="checkbox"/> | A new or worsening cough? |
| <input type="checkbox"/> | <input type="checkbox"/> | Shortness of breath/difficulty breathing? |
| <input type="checkbox"/> | <input type="checkbox"/> | Runny nose and/or congestion? |
| <input type="checkbox"/> | <input type="checkbox"/> | Body aches and/or tiredness? |
| <input type="checkbox"/> | <input type="checkbox"/> | Vomiting and/or diarrhea? |
| <input type="checkbox"/> | <input type="checkbox"/> | New loss of smell or taste? |

If the answer to any of the questions above is "yes", keep your child home and consult your primary care physician. If a doctor determines that the symptoms are due to another diagnosis, or COVID-19 is ruled out, your child may return to school after being fever-free for 24 hours **without** the use of fever-reducing medications.

- | | | |
|--------------------------|--------------------------|---|
| <input type="checkbox"/> | <input type="checkbox"/> | Have you or your child had close contact with anyone who had a positive COVID-19 diagnostic test in the past 14 days? |
| <input type="checkbox"/> | <input type="checkbox"/> | Have you or your child traveled out of the US in the last 14 days? |

If the answer is "yes" to either of these questions, you and your child must stay home to quarantine for 14 days since last contact or return to US.

Report any confirmed or suspected cases:

In the City of Detroit:

[Detroit Health Department](#)

Main Communicable Disease Line: (313) 876-4000

After Hours Call Center: (313) 876-4000

Dr. Benetra Young: benetra.young@dphdetroit.org - (313) 590-7800

Sarmed Rezz: sarmed.rezz@dphdetroit.org - (313) 736-1315

Outside the City of Detroit:

[Wayne County Public Health Division](#)

Main Communicable Disease Line: (734) 727-7078

After Hours Call Center: (734) 727-7284

Mary Roman: mary.roman@wcpd.org - (734) 727-7158

Wesley Wadwick: wesley.wadwick@wcpd.org - (734) 727-7253

Lukas Ayers: lukas.ayers@wcpd.org - (734) 727-7006



COVID-19 Tracking and Quarantine

- Each building will have a quarantine area for students with COVID symptoms awaiting pick up from school.
- A specific student COVID tracking protocol that includes tracking for confirmed COVID cases, suspected COVID cases and students subject to quarantine has been systemized across the district.
- Human resources has created a staff COVID tracking system that involves both an electronic component as well as a voice-to-voice component with each staff member potentially exposed or positive with COVID.

Middle School Schedule

The structure of learning and our school day:

→ Fully Remote

→ Hybrid

** OneGP Virtual will maintain the “Fully Remote” schedule throughout the 2020-21 school year

GP Traditional and OneGP Virtual **Fully Remote** Schedule (effective November 16th)

Grades 5th - 8th

- All students attend daily 6 period synchronous sessions M, T, Th & F
- Course order would follow hours 1 - 6 on M and Th and hours 6 - 1 on T and F
- Support time period for students each Wednesday by content
- Built in homework/study time on Wednesdays
- Content in courses will be reduced/adjusted to prioritize key learning and student mental health
- Students with IEPs indicating “Resource Program” &/or ancillary “services” will receive remote services according to the student’s Contingency Learning Plan (CLP) on days they are scheduled in the building.

Hybrid Return to F2F Format (date TBD)

Grades 5th - 8th

- 8:15 am to 3:13 pm Bell Schedule
- Students divided, primarily by alphabet, into two groups identified as Group A and Group B (divided by alphabet A-K and L-Z)
- Students attend school F2F, by group, using the following format:
 - ◆ Cohort A hours 1 - 6 will attend Face 2 Face on Monday/Thursday
 - ◆ Cohort B hours 6 - 1 will attend Face 2 Face on Tuesday/Friday
 - ◆ Both Cohort A & B: Zoom-based instruction on Wednesdays
- Due to safety concerns and increased safety measures, learning practices and activities will look different.
- Students with IEPs indicating “Resource Program” &/or ancillary “services” will receive in person programs and services according to the student’s Contingency Learning Plan (CLP) on days they are scheduled in the building.

*Please note, students in categorical ASD/CI special education programs will continue their current schedules

GP Traditional and OneGP Virtual** Daily **Fully Remote** (effective November 16th) and GP Traditional **Hybrid** Schedule Grades 5th - 8th

		A/B Day Generic MS Teacher Schedule (Allow for 1/2 Day Hybrid at HS)					Hybrid Zoom Schedule	Remote Student Schedule**
	Hour	M (A)	T (B)	W	Th (A)	F (B)	W	W
8:15 - 9:14	1/6	1st Hour	6th Hour	SEE WED SCHEDULE TO RIGHT	1st Hour	6th Hour	8:15 - 8:45 8:50 - 9:20 9:25 - 9:55 10:00 - 10:30 10:35 - 11:05 11:10 - 11:40	Elective/LRC Support
9:19 - 10:18	2/5	2nd Hour	5th Hour		2nd Hour	5th Hour		SS Support
10:23 - 11:22	3/4	3rd Hour	4th Hour		3rd Hour	4th Hour		Sci Support
11:27 - 11:57	Lunch	Lunch	Lunch		Lunch	Lunch		Lunch
12:02 - 1:01	4/3	4th Hour	3rd Hour		4th Hour	3rd Hour		Collaboration Time 12:15
1:06 - 2:05	5/2	5th Hour	2nd Hour		5th Hour	2nd Hour	Planning Time, Student Work Time	ELA Support
2:10 - 3:13	6/1	6th Hour	1st Hour		6th Hour	1st Hour		Elective/LRC Support

****OneGP Virtual will follow this schedule, including the Remote Student Schedule for Wednesdays, regardless of whether GP Traditional students are in remote or hybrid**

Fully Remote (effective November 16th) and Hybrid Schedule Explanation - Grades 5th - 8th

	<p><u>In Person Class while in Hybrid,</u> <u>Zoom Class While Remote</u></p>	<ul style="list-style-type: none"> • Attendance is required and students are expected to be <i>Present</i> for entire class <ul style="list-style-type: none"> ◦ Students presence is defined as participation throughout the duration of the lesson in all modalities and tools used. • Instruction will include but is not limited to a combination of the following components: <ul style="list-style-type: none"> ◦ Direct instruction, discussion, student-to-student collaboration, individual and/or small group student work time. ◦ There will be a check-in check-out at the beginning and end of each lesson. ◦ Most work will be completed during the synchronous class period. ◦ Honors courses can expect to also complete work outside of the synchronous class period
	<p><u>Zoom Class while in Hybrid</u></p>	<ul style="list-style-type: none"> • Focus is on checking in with students “at home work” • 5th and 6th Grade A/B Elective Classes become enrichment hours. Students have a choice of which one to attend.
	<p><u>Additional Teacher Planning time</u></p>	<ul style="list-style-type: none"> • Teachers need additional time to plan for remote learning
	<p><u>Collaboration Time</u></p>	<ul style="list-style-type: none"> • Grade Level: MTSS Focus (discussing and connecting with struggling students/families) • Department: Pacing Guide Alignment, Sharing of Remote Strategies, Schoology Standardization
	<p><u>Student Support Time</u></p>	<ul style="list-style-type: none"> • Teacher should be on Zoom the entire time. All students have access, some students are invited.

5th/6th Electives: M/Tu - A Day for 5th and 6th Electives, Th/F - B Day for 5th and 6th Electives

Hybrid: School work during at home days are an extension of learning during in person days (not new) as well as SEL activities.

High School Schedule

The structure of learning and our school day:

→ Fully Remote

→ Hybrid

** OneGP Virtual will maintain the “Fully Remote” schedule throughout the 2020-21 school year.

GP Traditional and OneGP Virtual **Fully Remote** Schedule - Effective November 16th through the End of the First Semester

Grades 9th - 12th

- All students attend daily 7 period synchronous sessions M, T, Th & F
- Course order would follow hours 1 - 7 on M and Th and hours 7 - 1 on T and F
- Support time period for students each Wednesday morning
- Built in homework/study time on Wednesdays
- Content in courses will be reduced/adjusted to prioritize key learning and student mental health
- Students with IEPs indicating “Resource Program” &/or ancillary “services” will receive remote services according to the student’s Contingency Learning Plan (CLP) on days they are scheduled in the building

GP Traditional and OneGP Virtual** Fully Remote Schedule (effective November 16th) - Grades 9th - 12th

100% Fully Synch Remote - Student Schedule							
50 Minute Schedule		M	T	W	Th	F	
8:00-8:50	1/7	Sync 1	Sync 7	1st 8:00-8:30 2nd 8:35 - 9:05 3rd 9:10 - 9:40 4th 9:45 - 10: 15 5th 10:20 - 10:50 6th 10:55 - 11:25 7th 11:30 - 12:00	Sync 1	Sync 7	
8:55-9:45	2/6	Sync 2	Sync 6		Sync 2	Sync 6	
9:50-10:40	3/5	Sync 3	Sync 5		Sync 3	Sync 5	
10:45-11:35	4/Lunch	Lunch	Sync 4		Lunch	Sync 4	
11:35-12:25	Lunch/4	Sync 4	Lunch		Sync 4	Lunch	
12:30-1:20	5/3	Sync 5	Sync 3		Student Homework Study Time	Sync 5	Sync 3
1:25-2:15	6/2	Sync 6	Sync 2			Sync 6	Sync 2
2:20-3:10	7/1	Sync 7	Sync 1	Sync 7		Sync 1	

**OneGP Virtual will follow this schedule, regardless of whether GP Traditional students are in remote or hybrid mode. 22

GP Traditional **Fully Remote** Schedule Explanation

Grades 9th - 12th

	Synchronous Zoom Class While in a Remote format (through the end of the 1st semester)	<ul style="list-style-type: none"> ● Attendance is required and students are expected to be PRESENT for the entire class period. <ul style="list-style-type: none"> ○ Students are expected to participate throughout the duration of the lesson. ○ Instruction will include, but is not limited to a combination of the following components: <ul style="list-style-type: none"> ■ Direct instruction, discussion, student-to-student collaboration, individual and/or small group student work time
	Student Support Time by period	<ul style="list-style-type: none"> ● Teachers will be on Zoom the entire time. All students have access to the support by class period when needed. Some students will be invited to these sessions for additional support.
	Built In Student Homework/Study Time	<ul style="list-style-type: none"> ● 3 Hour block of time built into the student schedule to study or complete homework. Depending on the level of class, students can still expect to be completing homework or studying after 3:10. ● For traditional courses, most work will be completed during the synchronous class period. ● Honors and AP courses can expect to also complete work outside of the synchronous class period.
<p>Tutorial classes <u>WILL NOT</u> meet during <u>remote</u> learning. Utilize this time for homework or to take a break.</p>		

GP Traditional **Hybrid** Return to F2F Format for Grades 9th - 12th

- Students divided, primarily by alphabet, into two groups identified as Group A and Group B (divided by alphabet A-K and L-Z)
- Students would attend high school in an AM or PM cohort with lunch off campus
- Students attend school F2F, by group, using the following format.
 - ◆ Cohort A: F2F each day M, T, Th and F in the AM
 - ◆ Cohort B: F2F each day M, T, Th and F in the PM
 - ◆ Both Cohort A & B: Zoom based instruction on Wednesdays
- 9th grade students will return to the building prior to 10 - 12 grade students
- Due to safety concerns and increased safety measures, learning practices and activities will look different.
- Students with IEPs indicating “Resource Program” &/or ancillary “services” will receive in person programs and services according to the student’s Contingency Learning Plan (CLP), on days they are scheduled in the building.

GP Traditional Hybrid Return to F2F Format for Cohort Schedule - Grades 9 - 12

Cohort A Hybrid ½ Day - Student Schedule						
50 Minute Schedule		M	T	W	Th	F
8:00-8:50	1/7	1st hour	7th hour	1st 8:00-8:30 2nd 8:35 - 9:05 3rd 9:10 - 9:40 4th 9:45 - 10: 15 5th 10:20 - 10:50 6th 10:55 - 11:25 7th 11:30 - 12:00	1st hour	7th hour
8:55-9:45	2/6	2nd hour	6th hour		2nd hour	6th hour
9:50-10:40	3/5	3rd hour	5th hour		3rd hour	5th hour
10:45-11:35	4/Lunch		4th hour			4th hour
11:35-12:25	Lunch/4	Async 4			Async 4	
12:30-1:20	5/3	Async 5	Async 3		Student Homework Study Time	Async 5
1:25-2:15	6/2	Async 6	Async 2	Async 6		Async 2
2:20-3:10	7/1	Async 7	Async 1	Async 7		Async 1

Cohort B Hybrid ½ Day - Student Schedule						
50 Minute Schedule		M	T	W	Th	F
8:00-8:50	1/7	Async 1	Async 7	1st 8:00-8:30 2nd 8:35 - 9:05 3rd 9:10 - 9:40 4th 9:45 - 10: 15 5th 10:20 - 10:50 6th 10:55 - 11:25 7th 11:30 - 12:00	Async 1	Async 7
8:55-9:45	2/6	Async 2	Async 6		Async 2	Async 6
9:50-10:40	3/5	Async 3	Async 5		Async 3	Async 5
10:45-11:35	4/Lunch		Async 4			Async 4
11:35-12:25	Lunch/4	4th hour			4th hour	
12:30-1:20	5/3	5th hour	3rd hour		Student Homework Study Time	5th hour
1:25-2:15	6/2	6th hour	2nd hour	6th hour		2nd hour
2:20-3:10	7/1	7th hour	1st hour	7th hour		1st hour

GP Traditional **Hybrid** Return to F2F Format for Cohort

Schedule Explanation - **Grades 9 - 12**

	COHORT A - Half day (AM) in person learning	<ul style="list-style-type: none"> Students are in the building receiving face to face instruction on Monday, Tuesday, Thursday and Friday. <ul style="list-style-type: none"> Classes start at 8 am. Classes end at 11:35 or 10:40.
	COHORT B - Half day (PM) in person learning	<ul style="list-style-type: none"> Students are in the building receiving face to face instruction on Monday, Tuesday, Thursday and Friday. <ul style="list-style-type: none"> Classes start at 12:30 pm or 11:35 am. Classes end at 3:10 pm.
	Asynchronous Learning	<ul style="list-style-type: none"> Students are expected to complete work that is an extension from face to face learning.
	Lunch on your own	<ul style="list-style-type: none"> School facilities will not be available for student lunches. Families will have access to Chartwells lunches with South as a lunch distribution location. Students must eat lunch off campus.
	Synchronous class sessions (Cohort A & B)	<ul style="list-style-type: none"> Attendance is required and students are expected to be PRESENT for the entire class period. <ul style="list-style-type: none"> Students are expected to participate throughout the duration of the lesson. Instruction will include, but is not limited to a combination of the following components: <ul style="list-style-type: none"> Direct instruction, discussion, student-to-student collaboration, individual and/or small group student work time
	Student homework/study time	<ul style="list-style-type: none"> 3 Hour block of time built into the student schedule to study or complete homework. Depending on the level of class, students can still expect to be completing homework or studying after 3:10. When students are not face to face, they will be working on asynchronous work.
<p>Tutorial classes will meet during hybrid learning. Utilize this time to complete homework</p>		