

# Blue Ribbon Committee Community Values

Grosse Pointe Public School System

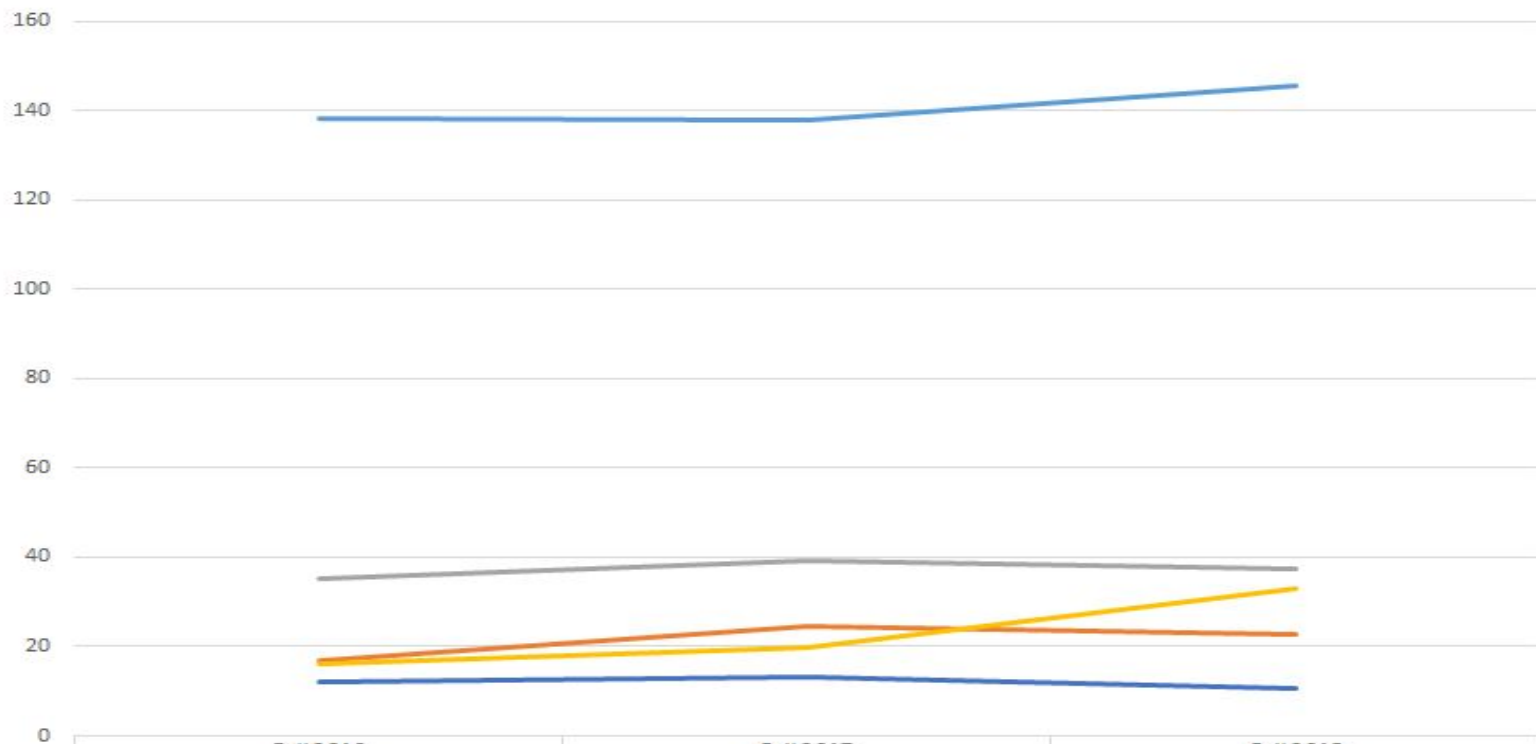
# Strategic Plan

Promote Innovation → Maximize Potential → Embrace Community

# Information Requested at the January 31st Blue Ribbon Committee Meeting

- GPPSS resident students that attend public non-GPPSS schools
- GPPSS enrollment projections by district
- GPPSS enrollment projections by building
- Updated reconfiguration options

## FTE of GPPSS Resident Students Attending WRESA Public Schools



	Fall 2016	Fall 2017	Fall 2018
Total	138.27	137.72	145.68
Chandler Park Academy	16.7	24.72	22.71
DPSCD	35.32	39.36	37.29
Harper Woods Public Schools	16	19.84	32.84
Redford Union Schools	11.98	13.15	10.57

— Total    
 — Chandler Park Academy    
 — DPSCD    
 — Harper Woods Public Schools    
 — Redford Union Schools

**ENROLLMENT PROJECTION USING COHORT SURVIVAL METHOD  
& Adjusted to Community Demographic Trends**

Educational Agency Name: Grosse Pointe Public School System  
County: Wayne

**BASED ON 2018 FALL FTE**  
DISTRICT WIDE (ALL PUPILS)

Birth Yr	2007	2008	2009	2010	2011	2012	2013	2014	2015	2016	2017	2018
Births	26,356	25,758	24,647	24,169	23,726	23,109	23,612	23,366	23,469	23,129	23,321	23,306
K% Birth	1.67%	1.75%	1.67%	1.67%	1.79%	1.93%	1.80%	1.75%	1.77%	1.77%	1.78%	1.80%

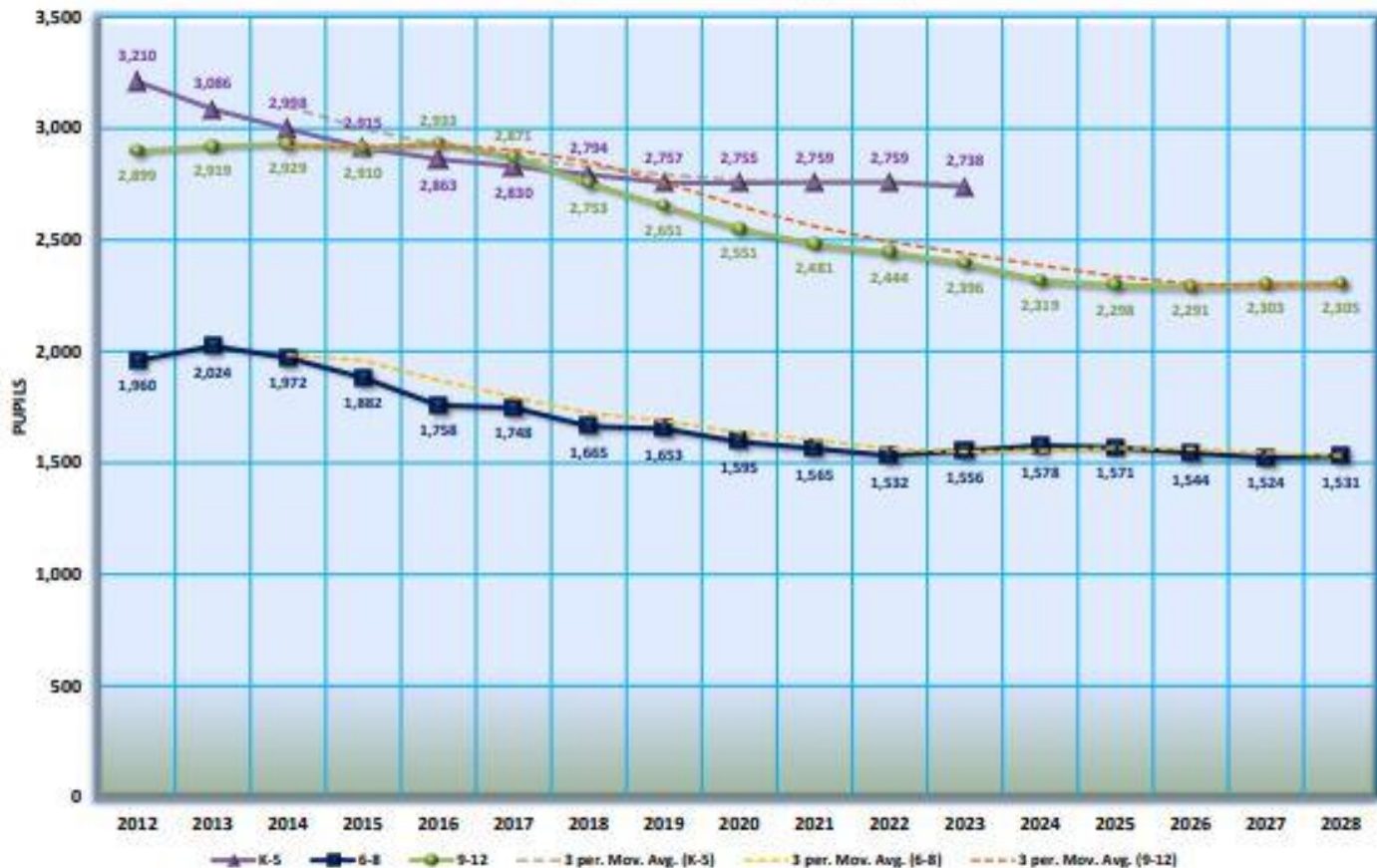
2018 Number of Live Births is an  
Average based on past 3 years

Anticipated Non-historical Factor: 0.21%

Grade	Historical Data								Projection Data									
	2012	2013	2014	2015	2016	2017	2018	2019	2020	2021	2022	2023	2024	2025	2026	2027	2028	
K	440	451	411	404	424	447	426	410	415	409	416	419	N.A.	N.A.	N.A.	N.A.	N.A.	
1	489	474	472	437	427	447	461	450	433	438	433	440	441	N.A.	N.A.	N.A.	N.A.	
	107.64%	104.77%	106.50%	105.68%	105.25%	103.15%	105.71%	105.71%	105.71%	105.71%	105.71%	105.71%	105.71%	105.71%	105.71%	105.71%	105.71%	
2	526	501	482	486	447	437	450	472	460	443	448	442	450	454	N.A.	N.A.	N.A.	
	102.31%	101.86%	102.89%	102.39%	102.34%	100.80%	102.28%	102.28%	102.28%	102.28%	102.28%	102.28%	102.28%	102.28%	102.28%	102.28%	102.28%	
3	535	507	522	492	503	470	453	462	484	473	455	460	454	462	466	N.A.	N.A.	
	96.43%	104.24%	101.92%	103.59%	105.18%	103.64%	102.71%	102.71%	102.71%	102.71%	102.71%	102.71%	102.71%	102.71%	102.71%	102.71%	102.71%	
4	583	565	537	553	505	502	481	471	481	504	491	473	479	472	480	484	N.A.	
	105.73%	105.97%	105.98%	102.75%	99.79%	102.57%	103.97%	103.97%	103.97%	103.97%	103.97%	103.97%	103.97%	103.97%	103.97%	103.97%	103.97%	
5	638	589	574	543	557	528	523	493	482	492	516	503	485	490	484	492	498	
	101.15%	101.54%	101.14%	100.63%	104.44%	104.05%	102.37%	102.37%	102.37%	102.37%	102.37%	102.37%	102.37%	102.37%	102.37%	102.37%	102.37%	
6	644	674	603	587	547	583	525	537	506	495	506	530	517	498	503	497	505	
	105.55%	102.38%	102.31%	100.69%	104.80%	99.43%	102.74%	102.74%	102.74%	102.74%	102.74%	102.74%	102.74%	102.74%	102.74%	102.74%	102.74%	
7	661	675	683	611	593	561	574	534	547	515	504	515	539	526	507	513	506	
	104.92%	101.38%	101.27%	100.95%	102.62%	98.42%	101.80%	101.80%	101.80%	101.80%	101.80%	101.80%	101.80%	101.80%	101.80%	101.80%	101.80%	
8	654	675	685	683	618	603	566	582	542	555	523	511	522	547	514	514	520	
	101.91%	101.50%	100.08%	101.21%	101.82%	100.90%	101.45%	101.45%	101.45%	101.45%	101.45%	101.45%	101.45%	101.45%	101.45%	101.45%	101.45%	
9	706	744	755	727	753	681	648	624	641	597	611	576	563	575	602	588	566	
	113.80%	111.84%	106.12%	110.20%	110.19%	107.30%	110.12%	110.12%	110.12%	110.12%	110.12%	110.12%	110.12%	110.12%	110.12%	110.12%	110.12%	
10	742	722	751	767	723	750	672	651	627	645	600	614	579	566	578	606	591	
	102.31%	100.92%	101.54%	99.46%	99.58%	98.59%	100.61%	100.61%	100.61%	100.61%	100.61%	100.61%	100.61%	100.61%	100.61%	100.61%	100.61%	
11	751	718	715	725	745	709	732	657	637	613	631	587	600	566	554	565	592	
	96.85%	98.96%	96.56%	97.12%	98.04%	97.65%	97.74%	97.74%	97.74%	97.74%	97.74%	97.74%	97.74%	97.74%	97.74%	97.74%	97.74%	
12	701	735	708	691	711	730	702	720	645	626	603	620	576	590	556	544	555	
	97.87%	98.60%	96.72%	98.12%	98.06%	98.93%	98.26%	98.26%	98.26%	98.26%	98.26%	98.26%	98.26%	98.26%	98.26%	98.26%	98.26%	
K-12	8,669	8,629	7,898	7,707	7,554	7,449	7,212	7,062	6,900	6,805	6,735	6,690	N.A.	N.A.	N.A.	N.A.	N.A.	
Year-to-Year %Growth:	-39	-131	-192	-153	-105	-217	-150	-162	-96	-69	-45							
Year-to-Year %Growth:	-0.49%	-1.63%	-2.42%	-1.99%	-1.38%	-3.19%	-2.08%	-2.29%	-1.39%	-1.02%	-0.67%							
ES	13	22	-	-	58	57	86	64	62	62	61	60						
Spec Ed	273	280	281	292	305	311	321	298	291	287	284	282						
Other	-	-	33	7	14	3	2	6	6	6	6	6						
<b>Totals</b>	<b>8,355</b>	<b>8,332</b>	<b>8,192</b>	<b>8,005</b>	<b>7,931</b>	<b>7,821</b>	<b>7,620</b>	<b>7,430</b>	<b>7,260</b>	<b>7,159</b>	<b>7,086</b>	<b>7,039</b>						

Note: K-12 General Education Pupil Enrollment history and projections DO NOT include self-contained special education, alternative education or part-time students (in FTE's).

Grade Pattern Compilation



<b>Elementary</b>	<b>2018-19</b>	<b>2019-20*</b>	<b>2020-21*</b>
Defer	332	337	345
Ferry	339	326	317
Kerby	357	361	376
Maire	304	300	290
Mason	301	297	311
Monteith	403	415	424
Poupard	291	268	255
Richard	311	298	302
Trombly	240	244	240
<b>ES Total</b>	<b>2880</b>	<b>2847</b>	<b>2861</b>

<b>Secondary School</b>	<b>2018-19</b>	<b>2019-20*</b>	<b>2020-21*</b>
Brownell	535	523	480
Parcells	641	653	638
Pierce	489	477	477
<b>MS Total</b>	<b>1665</b>	<b>1653</b>	<b>1594</b>
North	1255	1206	1155
South	1498	1434	1375
<b>HS Total</b>	<b>2753</b>	<b>2640</b>	<b>2530</b>

	<b>2018-19</b>	<b>2019-20*</b>	<b>2020-21*</b>
Elementary Total	2880	2847	2861
Middle School Total	1665	1653	1594
High School Total	2753	2640	2530
District Total	7298	7140	6986
Total Change		-158	-154



# Option #1 - General Reduction - Updated

Description: Maintain the current grade configuration (K-5, 6-8 and 9-12) while reducing buildings and reconfiguring buildings as available

New footprint: 7 ES (2 large), 2 MS, 2 HS and 1 ECC

Closed facilities: 3 ES and 389

Pros:

- Cost savings in excess of \$2,000,000
- Maintains current grade configuration
- Based on updated MS capacity this option is viable

Cons:

- Does not provide new opportunities for GPPSS students
- Impact on neighborhood school concept

# Option #8 - Reduce, Reconfigure, Create 1 Gravity School

Description: Reconfigure grades to include K-4, 5-8, 1 Gravity School (grades 3-8), and 2 HS

New footprint: 5 ES (1 large), 1 Gravity School, 2 MS, 2 HS and 1 ECC

Closed facilities: 4 ES and 389

## Pros:

- Creates one location for innovation and alternate programming for grade 3-8 students
- Increases the amount of time students spend at the MS level increasing participation and engagement
- Would allow for more curriculum options for 5th grade students
- Would allow for a greater literacy and early childhood focus at the ES level
- All grade K-8 students would experience impacted and improved instruction

## Cons:

- Impact on neighborhood school concept
- Requires significant work regarding curriculum and pedagogy