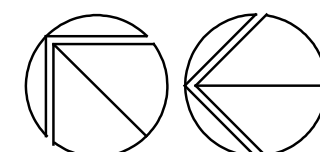


Directed by LANCE MORTON

Prepared by Elaine Moran

**✓ SHEET E**



**SCALE: 1/8" = 1' - 0"**

SCALE: 1/8" = 1'-0"  
REFER TO SHEET E3.10E FOR GENERAL AND CONSTRUCTION KEY NOTES

PBA Project No.: 2019.0133



236 Mill Street  
Rochester, MI  
48307  
T 248.656.1377  
F 248.656.7746  
© FRENCH ASSOCIATES, INC.

GROSSE POINTE  
PUBLIC SCHOOLS  
GROSSE POINTE  
SOUTH HS RENOV.

1 SHEET

## PROJECT NUMBER

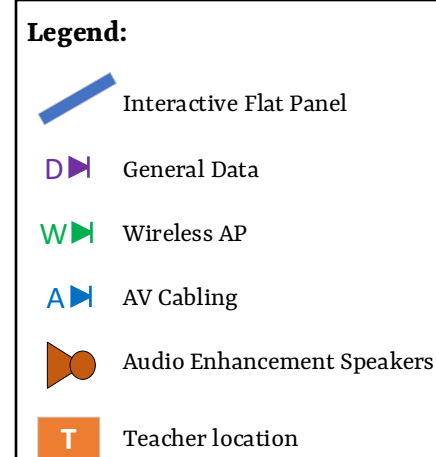
SHEET NUMBER

## E3.10C







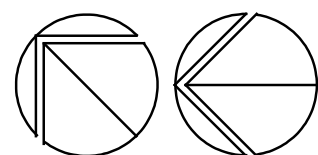
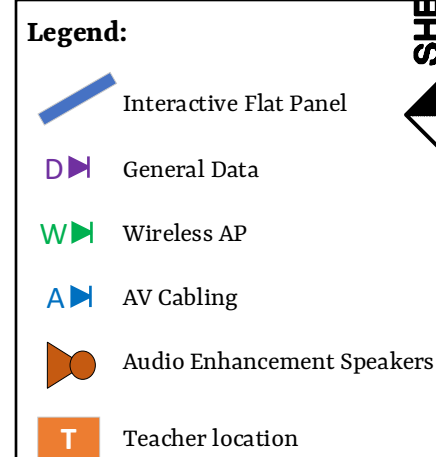


**SCALE: 1/8" = 1' - 0"**

## 2019-010 GPPSS GPSHS INTERIOR RENOVATION



**Grosse Pointe Public School System**  
**South High School - Technology**  
**Prepared by Plante Moran**



**UNIT F FIRST FLOOR POWER AND AUXILIARY SYSTEMS NEW WORK PLAN**  
**SCALE: 1/8" = 1' - 0"**  
 REFER TO SHEET E3.10E FOR GENERAL AND CONSTRUCTION KEY NOTES

ISSUE DATE	ISSUED FOR
01/27/20	CONSTRUCTION
DRAWN	ZDB
CHECKED	GJZ
APPROVED	GJZ



**FRENCH**  
associates

236 Mill Street  
Rochester, MI  
48307  
T 248.656.1377  
F 248.656.7746  
© FRENCH ASSOCIATES, INC.

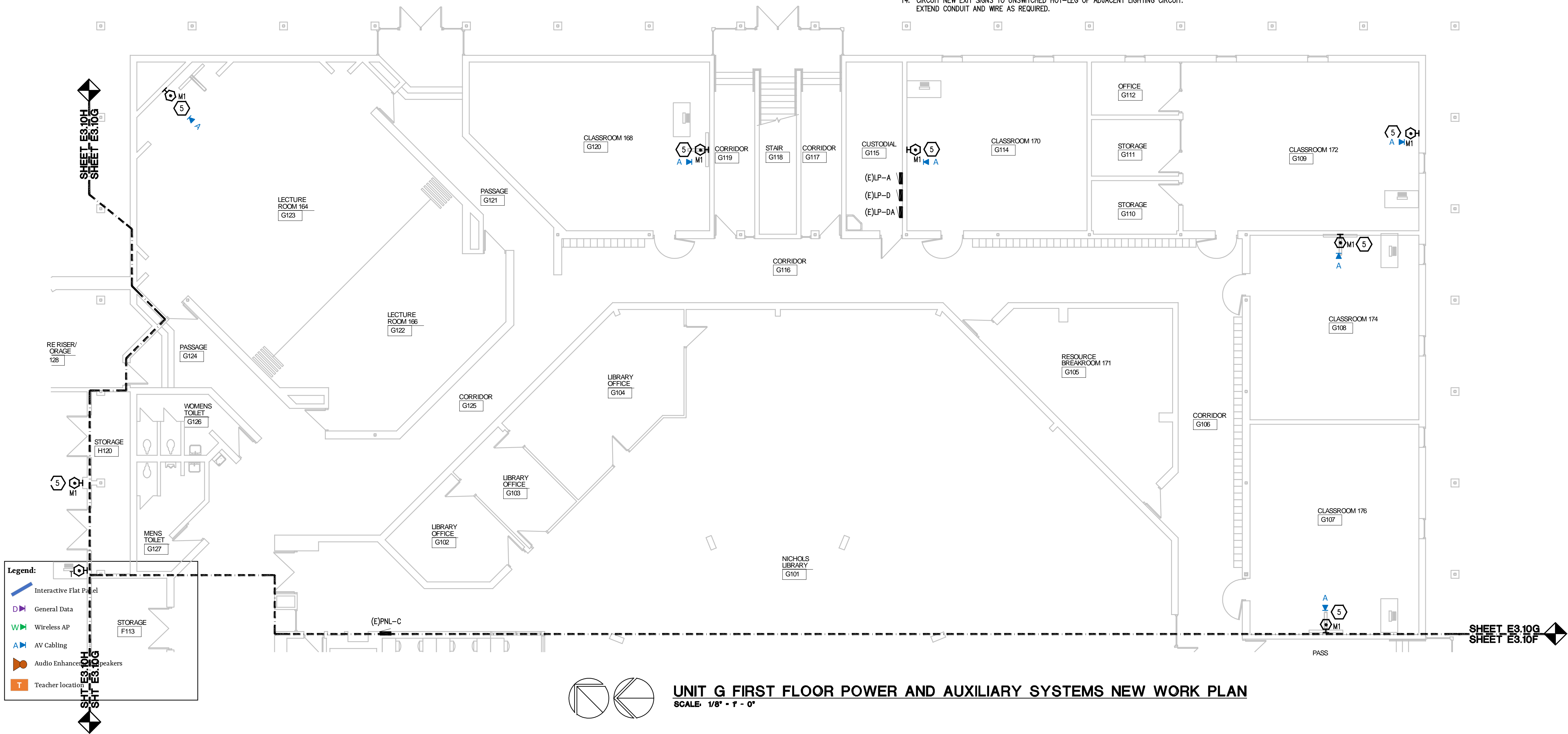
GROSSE POINTE  
PUBLIC SCHOOLS  
GROSSE POINTE  
SOUTH HS RENOV.

GROSSE POINTE FARMS,  
MICHIGAN

# UNIT F FIRST FLOOR POWER AND AUXILIARY SYSTEMS NEW WORK PLAN

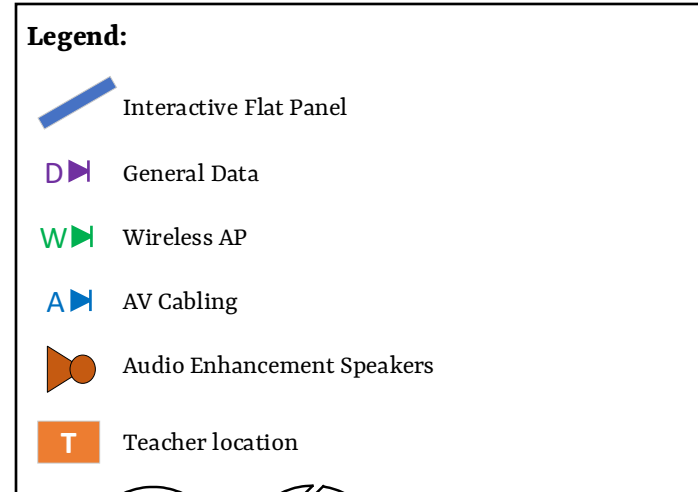
2019-010

### E3.10F






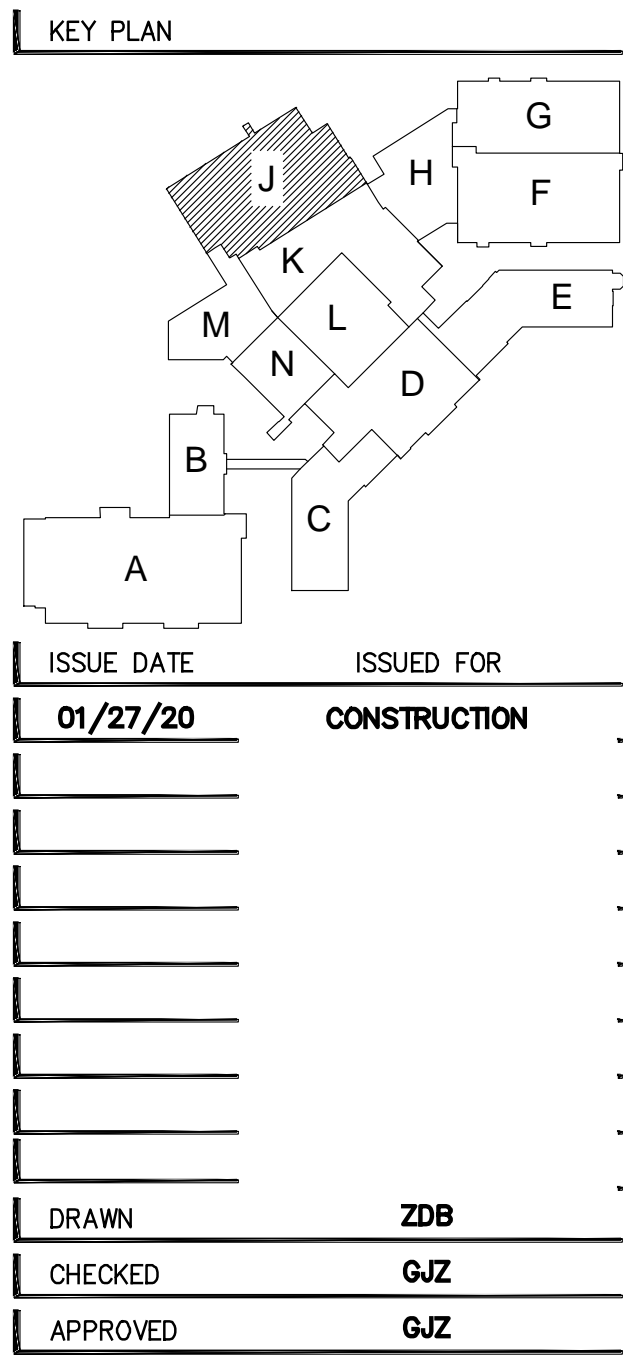
**Grosse Pointe Public School System  
South High School - Technology  
Prepared by Plante Moran**



**SCALE: 1/8" = 1' - 0"**

## 2019-010 GPPS GPSHS INTERIOR RENOVATION





**FRENCH**  
associates

PROJECT

GROSSE POINTE  
PUBLIC SCHOOLS  
GROSSE POINTE  
SOUTH HS RENOV.

UNIT J FIRST FLOOR  
POWER AND  
AUXILIARY SYSTEMS  
NEW WORK PLAN







SHEET NUMBER \_\_\_\_\_

## E3.10J

2019-010 GPPSS GPSHS INTERIOR RENOVATION

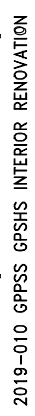
g:\2019\2019-0133-00\CAD\2019-0133-E3-PP1.dwg, E3.10J, 1/24/2020 3:16:06 PM, Dominic M. Quni, Peter Basso Associates Inc.

**Legend:**

-  Interactive Flat Panel
-  General Data
-  Wireless AP
-  AV Cabling
-  Audio Enhancement Speakers
-  Teacher location



MAIN  
GYMNASIUM 50  
J101



ISSUE DATE	ISSUED FOR
01/27/20	CONSTRUCTION

DRAWN	ZDB
CHECKED	GJZ
APPROVED	GJZ



236 Mill Street  
Rochester, MI  
48307  
T 248.656.1377  
F 248.656.7746  
© FRENCH ASSOCIATES, INC.

GROSSE POINTE  
PUBLIC SCHOOLS  
GROSSE POINTE  
SOUTH HS RENOV.

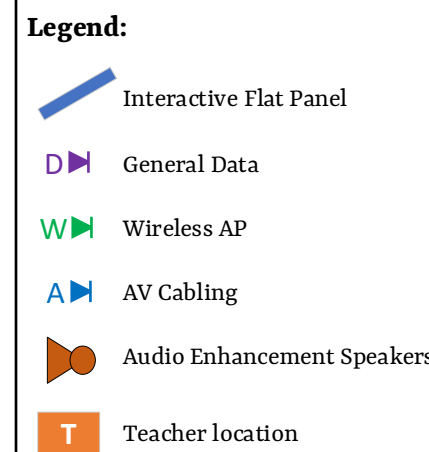
GROSSE POINTE FARMS,  
MICHIGAN

# UNIT K FIRST FLOOR POWER AND AUXILIARY SYSTEMS NEW WORK PLAN

2019-010

# E3.10K





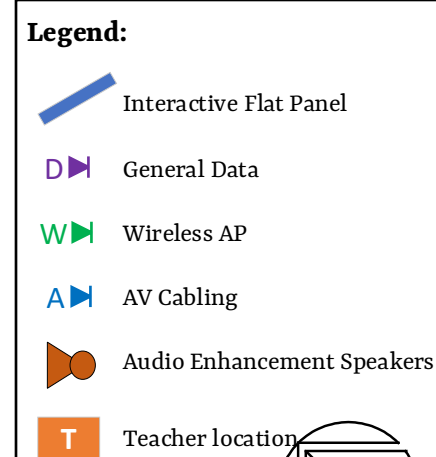
SCALE: 1/8" = 1'-0"  
REFER TO SHEET E3.20E FOR GENERAL AND CONSTRUCTION KEY NOTES

## E3.20C









**SCALE: 1/8" = 1' - 0"**

ZDB

CHECKED **GJZ**

APPROVED **GJZ**



236 Mill Street  
Rochester, MI  
48307  
T 248.656.1377  
F 248.656.7746  
© FRENCH ASSOCIATES, INC.

GROSSE POINTE  
PUBLIC SCHOOLS  
GROSSE POINTE  
SOUTH HS RENOV.

SHEET

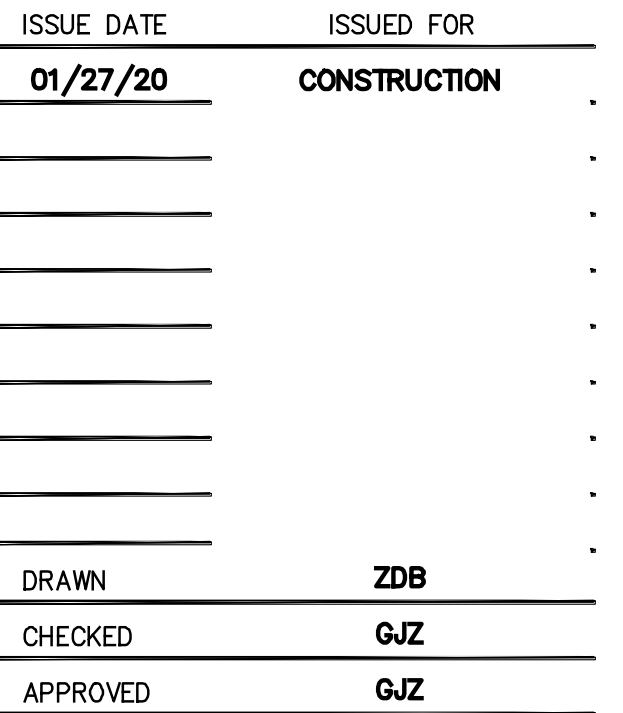
# UNIT E SECOND FLOOR POWER AND AUXILIARY SYSTEMS NEW WORK PLAN

2019-010

# E3.20E



REFER TO SHEET E3.20E FOR GENERAL AND CONSTRUCTION KEY NOTES



PBA Project No.: 2019.0133



PROJECT

SHEET

PROJECT NUMBER

SHEET NUMBER

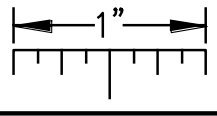
## E3.20F

g:\2019\2019-0133-00\CAD\2019-0133-E3-PP2.dwg, E3.20F, 1/24/2020 3:16:27 PM, Dominic M. Quni, Peter Basso Associates Inc.



g:\2019\2019-0133-00\CAD\2019-0133-E3-PP2.dwg, E3.20G, 1/24/2020 3:16:28 PM, Dominic M. Quni, Peter Basso Associates Inc.

THE FOLLOWING DIMENSION EQUALS  
ONE INCH WHEN PRINTED TO SCALE.



## Grosse Pointe Public School System

### South High School Technology

Prepared by Plante Moran

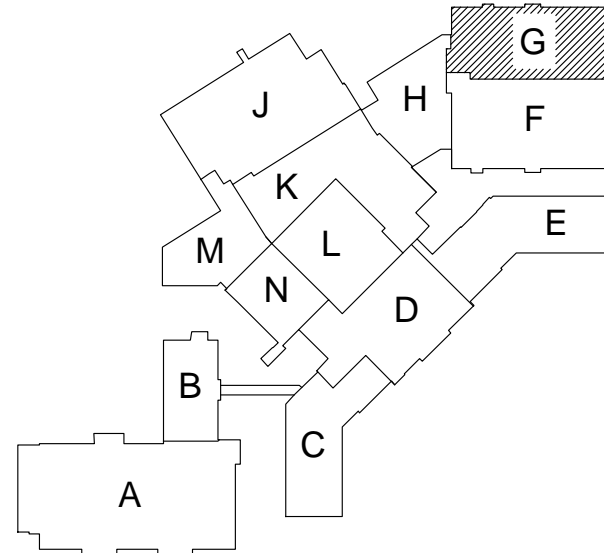
- THESE DRAWINGS REPRESENT THE GENERAL EXTENT AND ARRANGEMENT OF SYSTEMS, BUT ARE NOT TO BE CONSIDERED FABRICATION DRAWINGS. COORDINATE WITH OTHER TRADES, AND PROVIDE EACH SYSTEM COMPLETE, INCLUDING ALL NECESSARY COMPONENTS, FITTINGS, AND OFFSETS.
- INSTALL SYSTEMS SUCH THAT REQUIRED CLEARANCE AND SERVICE ACCESS SPACE IS PROVIDED AROUND ALL MECHANICAL AND ELECTRICAL EQUIPMENT, AND AROUND ANY COMPONENTS WHICH REQUIRE SERVICE ACCESS.
- COORDINATE AND PROVIDE ACCESS DOORS WITHIN INACCESSIBLE CEILING, SHAFT, AND CHASE AREAS FOR ALL COMPONENTS WHICH REQUIRE SERVICE ACCESS. REFER TO ARCHITECTURAL DRAWINGS FOR CEILING TYPES.
- PROVIDE SUPPLEMENTARY STEEL AS REQUIRED FOR THE PROPER SUPPORT OF ALL SYSTEMS.
- TRANSFORMER SECONDARY CONDUCTORS SHALL BE SIZED IN ACCORDANCE WITH TRANSFORMER CIRCUIT SIZING SCHEDULE SHOWN ON "ELECTRICAL STANDARD SCHEDULES DRAWING" UNLESS OTHERWISE NOTED.
- MOTOR CIRCUIT PROTECTION SHALL BE SIZED IN ACCORDANCE WITH MOTOR CIRCUIT SIZING SCHEDULES SHOWN ON "ELECTRICAL STANDARD SCHEDULES DRAWING" UNLESS OTHERWISE NOTED.
- COORDINATE THE MOUNTING HEIGHTS OF DEVICES WITH ARCHITECTURAL ELEVATIONS AND THE TRADES INSTALLING THE WORK.
- COORDINATE EXACT LOCATIONS OF ALL FLOOR SERVICE FITTINGS AND POKE-THROUGH ASSEMBLIES WITH FINAL FURNITURE LAYOUT DRAWINGS.
- REFER TO MECHANICAL SCHEDULE SHEETS FOR ELECTRICAL REQUIREMENTS FOR MECHANICAL EQUIPMENT. PROVIDE ALL CONNECTIONS, STARTERS, DISCONNECTS, ETC. AS REQUIRED BY SCHEDULES AND WHERE NOTED ELSEWHERE. VERIFY REQUIREMENTS OF ALL MECHANICAL EQUIPMENT WITH SHOP DRAWINGS SUBMITTALS. NOTIFY ENGINEER OF ANY CONFLICTS BETWEEN EQUIPMENT SUBMITTALS AND ELECTRICAL DRAWINGS. WHERE CIRCUIT SIZES ARE SHOWN ON THE ELECTRICAL DRAWINGS THAT DIFFER FROM WHAT IS INDICATED ON THE MECHANICAL SCHEDULES, PROVIDE THE CIRCUIT OF HIGHER AMPACITY.
- REFER TO TEMPERATURE CONTROLS SHEETS FOR REQUIRED MOTOR CONTROLLERS. PROVIDE ALL ACCESSORIES INDICATED.

- REFER TO LIGHTING CONTROL SCHEDULE FOR ROOM CONTROL AND EMERGENCY LIGHTING CIRCUIT CONTROL REQUIREMENTS. DESIGNATION FOR ROOM IS INDICATED AS A LETTERED OVAL SYMBOL.
- ALL FIRE ALARM DEVICES SHALL BE COMPATIBLE WITH EXISTING FIRE ALARM SYSTEM. PROVIDE NECESSARY COMPONENTS, MODULES, ETC. AS REQUIRED FOR A FULLY FUNCTIONAL SYSTEM. RE-TEST AND CERTIFY EXISTING FIRE ALARM SYSTEM AT COMPLETION OF PROJECT.
- WHERE LIGHTING IS BEING REMOVED AND REINSTALLED AND EXISTING CIRCUITING IS TO REMAIN, PROVIDE GROUND WIRE AS REQUIRED PER N.E.C.
- CIRCUIT NEW EXIT SIGNS TO UNSWITCHED HOT-LEG OF ADJACENT LIGHTING CIRCUIT. EXTEND CONDUIT AND WIRE AS REQUIRED.

#### # CONSTRUCTION KEY NOTES:

- CIRCUIT NEW PANELBOARD TO MAINTAINED FEEDER AND BRANCH CIRCUITS. EXTEND CONDUIT AND WIRE AS REQUIRED.
- CIRCUIT NEW MECHANICAL EQUIPMENT TO MAINTAINED BRANCH CIRCUIT. EXTEND CONDUIT AND WIRE AS REQUIRED.
- DUCT SMOKE DETECTOR SHALL BE PROVIDED BY THE ELECTRICAL CONTRACTOR. COORDINATE REQUIRED QUANTITIES AND MOUNTING LOCATIONS WITH THE DUCTWORK CONTRACTOR TO MEET CODE (PROVIDE 4 DUCT SMOKE DETECTORS FOR BID PURPOSES. QUANTITIES WILL BE ADJUSTED AFTER COMPLETION OF WORK). COORDINATE INSTALLATION WITH THE MECHANICAL CONTRACTOR SO THAT UPON DETECTION OF SMOKE, THE SUPPLY/RETURN FAN WILL SHUT DOWN. ELECTRICAL CONTRACTOR SHALL WIRE DUCT SMOKE DETECTOR TO FIRE ALARM SYSTEM. CONTROL OF AIR HANDLING EQUIPMENT IS VIA THE FIRE ALARM CONTROL PANEL. PROVIDE ALL REQUIRED FIRE ALARM CONTROL MODULES AND RELAYS TO INTERFACE WITH SUPPLY FAN AND ASSOCIATED RETURN FAN (OR EXHAUST FAN). COORDINATE WORK WITH THE TEMPERATURE CONTROL CONTRACTOR AND FIRE ALARM VENDOR. PROVIDE ALL CONTROL MODULES, RELAYS, ETC FOR A COMPLETE SYSTEM
- PROVIDE WEATHER RATED GFI RECEPTACLE WITH IN USE COVER FOR LANDSCAPE LIGHTING CONTROLLER(S). ELECTRICAL CONTRACTOR IS RESPONSIBLE TO PROVIDE CONDUIT, AS REQUIRED, TO LANDSCAPE LIGHTING FIXTURES. LIGHT FIXTURES AND WIRE ARE PROVIDED BY LANDSCAPE CONTRACTOR. COORDINATE FINAL LOCATION WITH LANDSCAPE CONTRACTOR PRIOR TO INSTALLATION.

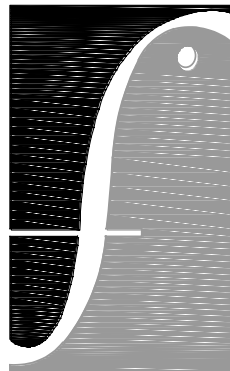
#### KEY PLAN



ISSUE DATE	ISSUED FOR
01/27/20	CONSTRUCTION
DRAWN	ZDB
CHECKED	G/JZ
APPROVED	G/JZ



Peter Basso Associates Inc.  
CONSULTING ENGINEERS  
5145 Livernois, Suite 100  
Troy, Michigan 48098-3276  
Tel: 248-879-5666  
Fax: 248-879-0007  
www.PeterBassoAssociates.com  
PBA Project No.: 20190133



architects planners interiors

## FRENCH associates

236 Mill Street  
Rochester, MI  
48307  
T 248.656.1377  
F 248.656.7746  
© FRENCH ASSOCIATES, INC.

#### PROJECT

GROSSE POINTE  
PUBLIC SCHOOLS  
GROSSE POINTE  
SOUTH HS RENOV.

GROSSE POINTE FARMS,  
MICHIGAN

#### SHEET

UNIT G SECOND  
FLOOR POWER AND  
AUXILIARY SYSTEMS  
NEW WORK PLAN

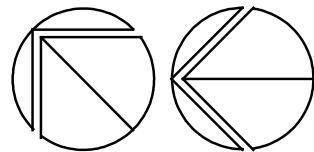
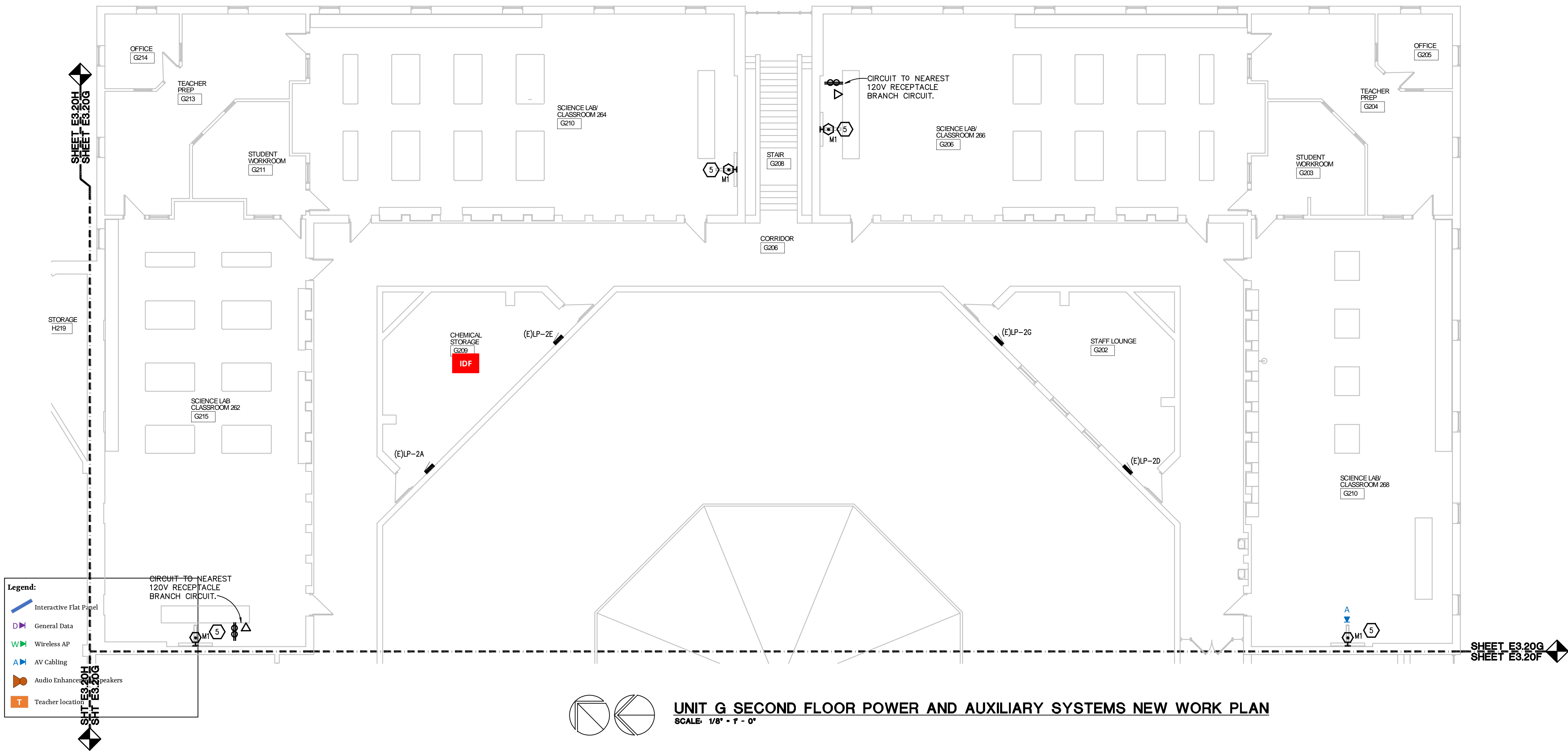
#### PROJECT NUMBER

2019-010

#### SHEET NUMBER

E3.20G

2019-010 GPSS INTERIOR RENOVATION



## UNIT G SECOND FLOOR POWER AND AUXILIARY SYSTEMS NEW WORK PLAN

SCALE: 1/8" = 1' - 0"

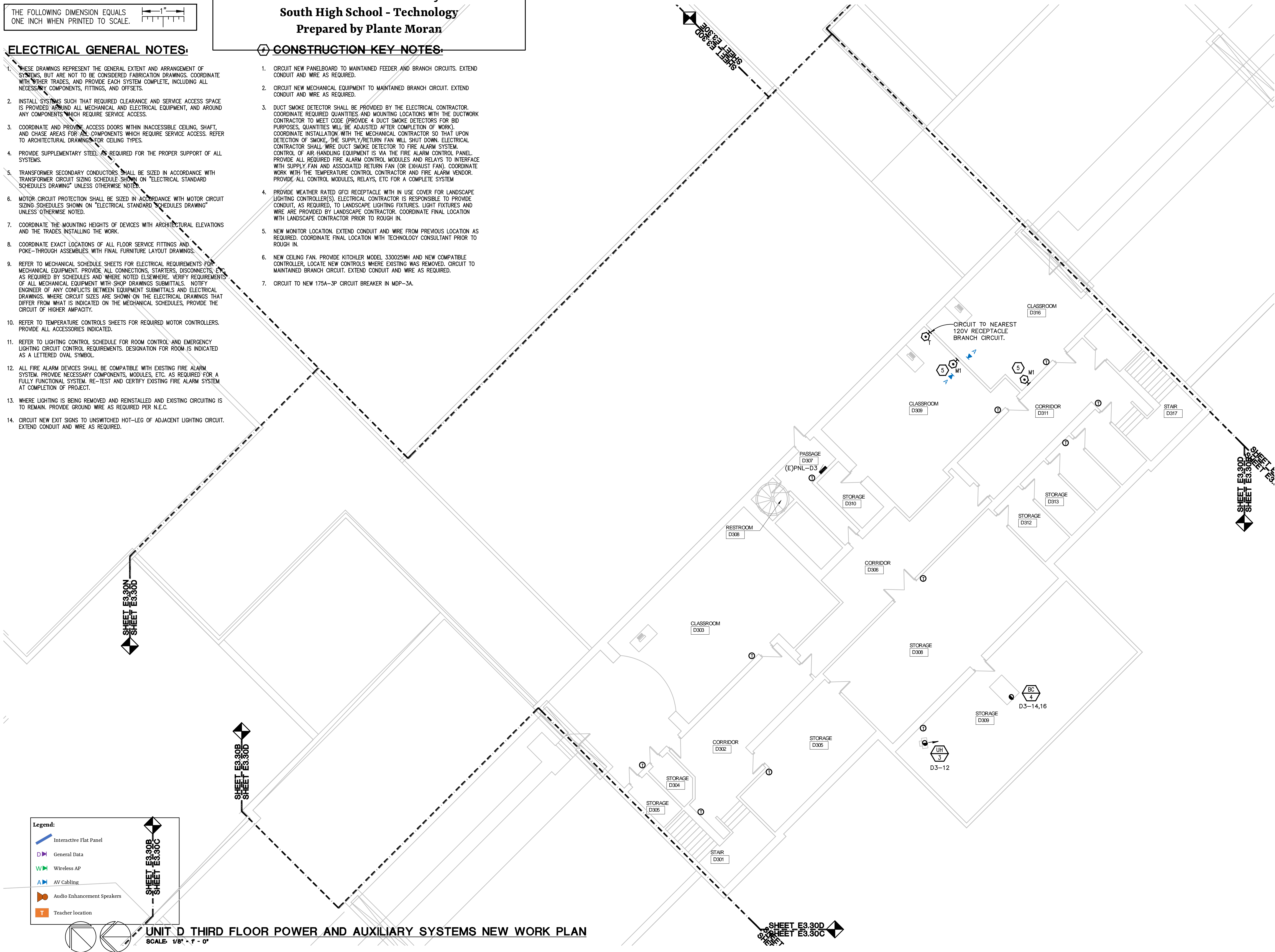
SHEET E3.20G  
SHEET E3.20F



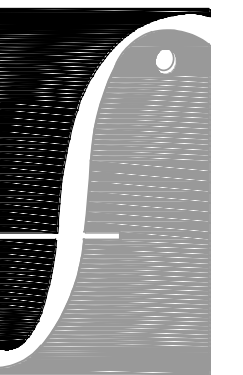
### CONSTRUCTION KEY NOTES:

1. THESE DRAWINGS REPRESENT THE GENERAL EXTENT AND ARRANGEMENT OF SYSTEMS, BUT ARE NOT TO BE CONSIDERED FABRICATION DRAWINGS. COORDINATE WITH OTHER TRADES, AND PROVIDE EACH SYSTEM COMPLETE, INCLUDING ALL NECESSARY COMPONENTS, FITTINGS, AND OFFSETS.
2. INSTALL SYSTEMS SUCH THAT REQUIRED CLEARANCE AND SERVICE ACCESS SPACE IS PROVIDED AROUND ALL MECHANICAL AND ELECTRICAL EQUIPMENT, AND AROUND ANY COMPONENTS WHICH REQUIRE SERVICE ACCESS.
3. COORDINATE AND PROVIDE ACCESS DOORS WITHIN INACCESSIBLE CEILING, SHAFT, AND CHASE AREAS FOR ALL COMPONENTS WHICH REQUIRE SERVICE ACCESS. REFER TO ARCHITECTURAL DRAWINGS FOR CEILING TYPES.
4. PROVIDE SUPPLEMENTARY STEEL AS REQUIRED FOR THE PROPER SUPPORT OF ALL SYSTEMS.
5. TRANSFORMER SECONDARY CONDUCTORS SHALL BE SIZED IN ACCORDANCE WITH TRANSFORMER CIRCUIT SIZING SCHEDULE SHOWN ON "ELECTRICAL STANDARD SCHEDULES DRAWING" UNLESS OTHERWISE NOTED.
6. MOTOR CIRCUIT PROTECTION SHALL BE SIZED IN ACCORDANCE WITH MOTOR CIRCUIT SIZING SCHEDULES SHOWN ON "ELECTRICAL STANDARD SCHEDULES DRAWING" UNLESS OTHERWISE NOTED.
7. COORDINATE THE MOUNTING HEIGHTS OF DEVICES WITH ARCHITECTURAL ELEVATIONS AND THE TRADES INSTALLING THE WORK.
8. COORDINATE EXACT LOCATIONS OF ALL FLOOR SERVICE FITTINGS AND POKE-THROUGH ASSEMBLIES WITH FINAL FURNITURE LAYOUT DRAWINGS.
9. REFER TO MECHANICAL SCHEDULE SHEETS FOR ELECTRICAL REQUIREMENTS FOR MECHANICAL EQUIPMENT. PROVIDE ALL CONNECTIONS, STARTERS, DISCONNECTS, ETC. AS REQUIRED BY SCHEDULE AND CODE. NOTE ELEMENR. VERIFY REQUIREMENTS OF ALL MECHANICAL EQUIPMENT WITH SHOP DRAWINGS SUBMITTALS. NOTIFY ENGINEER OF ANY CONFLICTS BETWEEN EQUIPMENT SUBMITTALS AND ELECTRICAL DRAWINGS. WHERE CIRCUIT SIZES ARE SHOWN ON THE ELECTRICAL DRAWINGS THAT DIFFER FROM WHAT IS INDICATED ON THE MECHANICAL SCHEDULES, PROVIDE THE CIRCUIT OF HIGHER AMPACITY.
10. REFER TO TEMPERATURE CONTROLS SHEETS FOR REQUIRED MOTOR CONTROLLERS. PROVIDE ALL ACCESSORIES INDICATED.
11. REFER TO LIGHTING CONTROL SCHEDULE FOR ROOM CONTROL AND EMERGENCY LIGHTING CIRCUIT CONTROL REQUIREMENTS. DESIGNATION FOR ROOM IS INDICATED AS A LETTERED OVAL SYMBOL.
12. ALL FIRE ALARM DEVICES SHALL BE COMPATIBLE WITH EXISTING FIRE ALARM SYSTEM. PROVIDE NECESSARY COMPONENTS, MODULES, ETC. AS REQUIRED FOR A FULLY FUNCTIONAL SYSTEM. RE-TEST AND CERTIFY EXISTING FIRE ALARM SYSTEM AT COMPLETION OF PROJECT.
13. WHERE LIGHTING IS BEING REMOVED AND REINSTALLED AND EXISTING CIRCUITING IS TO REMAIN. PROVIDE GROUND WIRE AS REQUIRED PER N.E.C.
14. CIRCUIT NEW EXIT SIGNS TO UNSWITCHED HOT-LEG OF ADJACENT LIGHTING CIRCUIT. EXTEND CONDUIT AND WIRE AS REQUIRED.

1. CIRCUIT NEW PANELBOARD TO MAINTAINED FEEDER AND BRANCH CIRCUITS. EXTEND CONDUIT AND WIRE AS REQUIRED.
2. CIRCUIT NEW MECHANICAL EQUIPMENT TO MAINTAINED BRANCH CIRCUIT. EXTEND CONDUIT AND WIRE AS REQUIRED.
3. DUCT SMOKE DETECTOR SHALL BE PROVIDED BY THE ELECTRICAL CONTRACTOR. COORDINATE REQUIRED QUANTITIES AND MOUNTING LOCATIONS WITH THE DUCTWORK CONTRACTOR TO MEET CODE (PROVIDE 4 DUCT SMOKE DETECTORS FOR BID PROVIDE QUANTITIES TO BE ADJUSTED AFTER COMPLETION OF WORK). COORDINATE INSTALLATION WITH THE MECHANICAL CONTRACTOR SO THAT UPON DETECTION OF SMOKE, THE SUPPLY/RETURN FAN WILL SHUT DOWN. ELECTRICAL CONTRACTOR SHALL WIRE DUCT SMOKE DETECTOR TO FIRE ALARM SYSTEM. CONTROL OF AIR HANDLING EQUIPMENT IS VIA THE FIRE ALARM CONTROL PANEL. PROVIDE ALL REQUIRED FIRE ALARM CONTROL MODULES AND RELAYS TO INTERFACE WITH SUPPLY FAN AND RETURN FAN (OR EXISTING FAN) CONTRACTOR COORDINATE WORK WITH THE TEMPERATURE CONTROL CONTRACTOR AND FIRE ALARM VENDOR. PROVIDE ALL CONTROL MODULES, RELAYS, ETC FOR A COMPLETE SYSTEM
4. PROVIDE WEATHER RATED GFCI RECEPTACLE WITH IN USE COVER FOR LANDSCAPE LIGHTING CONTROLLERS(S). ELECTRICAL CONTRACTOR IS RESPONSIBLE TO PROVIDE CONDUIT, AS REQUIRED, TO LANDSCAPE LIGHTING FIXTURES. LIGHT FIXTURES AND WIRE ARE PROVIDED BY LANDSCAPE CONTRACTOR. COORDINATE FINAL LOCATION WITH LANDSCAPE CONTRACTOR PRIOR TO ROUGH IN.
5. NEW MONITOR LOCATION. EXTEND CONDUIT AND WIRE FROM PREVIOUS LOCATION AS REQUIRED. COORDINATE FINAL LOCATION WITH TECHNOLOGY CONSULTANT PRIOR TO ROUGH IN.
6. NEW CEILING FAN. PROVIDE KITCHLER MODEL 330025WH AND NEW COMPATIBLE CONTROLLER, LOCATE NEW CONTROLS WHERE EXISTING WAS REMOVED. CIRCUIT TO MAINTAINED BRANCH CIRCUIT. EXTEND CONDUIT AND WIRE AS REQUIRED.
7. CIRCUIT TO NEW 175A-3P CIRCUIT BREAKER IN MDP-3A.

[illegible]

**Peter Basso Associates Inc**  
CONSULTING ENGINEERS  
5145 Livernois, Suite 100  
Troy, Michigan 48098-3276  
Tel: 248-879-5666  
Fax: 248-879-0007  
[www.PeterBassoAssociates.com](http://www.PeterBassoAssociates.com)  
PBA Project No.: 2019.0133



architects planners interiors

**FRENCH**  
associates

36 Mill Street  
Rochester, MI  
48307  
248.656.1377  
248.656.7746  
FRENCH ASSOCIATES, INC.

GROSSE POINTE  
PUBLIC SCHOOLS  
GROSSE POINTE  
SOUTH HS RENOV.

GROSSE POINTE FARMS,  
MICHIGAN

# UNIT D THIRD FLOOR POWER AND AUXILIARY SYSTEMS NEW WORK PLAN

## 2019-010

### E3.30D