

Grosse Pointe Public Schools

Trombly Times

Walter Fitzpatrick, Principal

September 5, 2008

**Welcome
Back!**

Dear Parents,

Welcome Back! It was so great to greet all the happy faces on Wednesday morning. Being in the building during the summer has a different feel than during the school. I personally prefer the sounds that begin in September and last to June. I hope that everyone's summer was exciting and enjoyable. We are looking forward to another great year!

Staffing Changing

There are a few staff changes this year. We sadly say good-bye to a few very special people. Our head engineer Mr. Z has moved to Pierce Middle School to become their head engineer. One of our classroom assistants, Millecent Weigandt, has returned to school to obtain

her teaching certification. Trombly's Language Arts Specialist, Dr. Chris Kaiser, has retired. Nikki Scarbrough, our social worker, has taken a leave of absence for this school year. The most recent departure is Valter Dervishi. Valter has transferred to Ferry as their lead night person. We will miss them all.

We are very fortunate to have Bob Fradeneck taking over for Mr. Z. Bob comes to us having worked previously at Grosse Pointe South High School. Jesse Bordato and Liz Malseed join our staff as new classroom assistants. Suellen Lohr returns to Trombly as our Language Arts Specialist. Our new social worker is Kathy Bailey. She is a new hire in

the district and will be on a shared assignment between Mason Elementary and Trombly. Valter's departure is so new that a replacement has not been found.

Finally, our first grade has a new look. Shelley Denison was part of a job-share assignment in first grade with Michelle Bachert last year. This year Shelley will be one of the two full time teachers in first grade. The other teacher is a familiar face but with a different last name. Ms Kaye was married this summer and is now Mrs. Dykstra. Mrs. Bachert has become the teacher of the new extended-day kindergarten class at Trombly.

About Flyers:

The periodic distribution of non-school related written materials does not constitute an endorsement by the school system of those materials or of the groups sponsoring them.

All printing costs are paid for by the sponsoring organization, not the Schools.

Bell Schedule:

8:20 AM Entry into School

8:25 AM Late Bell

11:34 AM Lunch

12:29 PM Start of the afternoon session

3:38 PM Dismissal



School Picture Day:

Thursday, October 8

Make-up and Retake day:

Friday, November 14

Report Cards:

Thursday, December 11

Wednesday, March 11

Thursday, June 11



MEAP SCHEDULE—2008-2009

<u>Date</u>	<u>Subject</u>	<u>Grades</u>
Tuesday, October 14	Math	3 - 4 - 5
Thursday, October 16	ELA - Part 1	3 - 4 - 5
Tuesday, October 21	ELA - Part 2	3 - 4 - 5
Thursday, October 23	Science	5
<u>Make-ups</u>		
Monday, October 20	Math	3 - 4 - 5
Wednesday, October 22	ELA - Part 1	3 - 4 - 5
Monday, October 27	ELA - Part 2	3 - 4 - 5
Tuesday, October 28	Science	5

All testing must be completed by Thursday, October 30.

***We ask that you do not schedule appointments and vacations on the days of testing. Additional information will be sent home as we get closer to the testing window.



This edition of the Trombly Times has been sent home with every child. In the future we will be sending it home with only the youngest or only child in each family. You may receive it by email in-

Trombly Times

stead of by backpack. If you would like it by email, please send an email to Mrs. Goodwin at diane.goodwin@gpsc.hools.org. She will add your family's name to the email group.

- Thursday, September 18
- Thursday, February 12
- Thursday, October 16
- Thursday, March 19
- Thursday, November 20
- Thursday, April 23
- Thursday, December 18
- Thursday, May 21
- Thursday, January 15

Dropping Off and Picking Up Students

We have now finished week one of the school year and the students are quickly adapting to their new classes. One of our goals every year is to increase the level of independence and responsibility of our students. To help us achieve this goal we are asking for your assistance. Please do not accompany

your child into the building but instead allow them to walk in with their class. When picking them up, please greet them outside the school building not at their lockers or classroom door.

are emptied each morning and their belongings placed in their lockers. They will also assist each child to make sure their backpacks are filled at the end of the day.

Your child's teacher will assist them in making sure their backpacks

For your Calendar

Parent-Teacher Conferences:

Fall:

Thursday, Nov. 6
Afternoon and Evening

Thursday, November 1
Morning and Evening

Spring:

Thursday, March 12
Afternoon and Evening

Thursday, March 19
Morning and Evening

Half-days of School:

Friday, October 31 - PM school only

Thursday, November 6 - AM school only

Thursday, November 13 - PM School only

Tuesday, November 25 - AM School only

Thursday, March 12 - AM School only

Thursday, March 19 - PM School only

Thursday, June 11 - AM School only (last day)



Caption describing picture or graphic.

PTO Meetings

An important piece of the school's success is the PTO. The group has been very supportive over the years helping enrich our students' school experience. They have funded classroom periodicals, supported field trips, added new books to the library provided financial support for school assem-

blies. We encourage you to join and become an active member. You can volunteer your time and attend the regularly scheduled meetings. These meetings are held in the school's library at 7:30 PM. The meeting dates are:

Wednesday, September 17

Wednesday, February 11

Wednesday, October 8

Wednesday, March 11

Wednesday, November 12

Wednesday, April 8

Wednesday, December 10

Wednesday, May 13

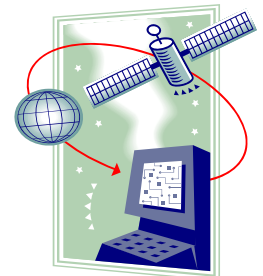
Wednesday, January 14

"To catch the reader's attention, place an interesting sentence or quote from the story here."

Back-To-School Night

Trombly's Back-To-School Night is scheduled for Thursday, September 11. The schedule will be sent home with your child next week. This night is for adults only.

Enrollment:	
Kindergarten	44
First Grade	45
Second Grade	47
Third Grade	41
Fourth Grade	56
Fifth Grade	50



Caption describing picture or graphic.

Walking, Bicycles and Scooters

We encourage all students to walk, ride the bicycles or scooters to school. If your child walks to school, they should cross at the corners manned by the safety/service squad. Please do not allow or encourage your child to cross in the middle of Beaconsfield. Last year two students did so at their parents' request and ran into a moving car. Fortunately they were not hurt but that is a tragedy waiting to happen.

Students riding their bikes or scooters must follow the same rules as the walkers. They need to cross at the corners manned by the safety/service squad. Upon arriving on the school property bikes must be walked to the playground and locked to the bike rack. We encourage bike riders to wear a helmet.

The same rules apply to students riding their scooter. The only difference is that the scooters must be folded and kept in the student's locker.

Absences

If your child will not be at school, please call the attendance line at 432-5001. If no phone call is received, the office will be calling to confirm that your child is indeed not in school. When leaving a message please state your child's name, their teacher and the reason for the absence. For certain illnesses we are required to notify others in the classroom and perhaps the entire Trombly community.

Lunch

Students may bring lunch from home or purchase a school lunch. A school lunch consists of one entrée, two sides and milk. The cost is \$2.50. Students who decide to bring their lunch may purchase milk for \$0.50 in the lunch room.

Forgot Something?

If your child left something at home like lunch, gym shoes or homework, you may bring those items to the school office. We will get the item to your child as quickly as we can. Please do not go to your child's classroom or locker.

Visiting Trombly?

For the safety of our students and staff all visitors to Trombly need to report to the school office and sign in on the visitor clipboard on the counter. You will be asked to wear a visitor's badge. If you do not have one, you may be stopped by a staff member who will then direct you to the office.
